



## We Have the Core Bits For You

When you have the tough application, whatever the size or material, we can customize your core bit to fit any coring job.

- Bits 1/2" to 80"+ diameters
- Custom sizes and specifications
- Dry and wet applications
- Diamond and carbide core bits
- Laser welded or brazed segments



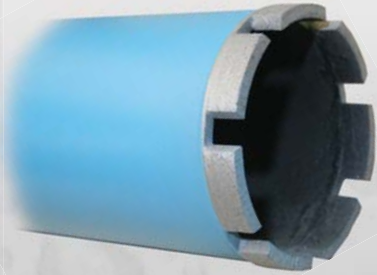
# STAR BLUE & UTILITY GREEN WET CORE BITS

WET CORE BITS



### Specification

**BOL** - General purpose, cured concrete and hard materials



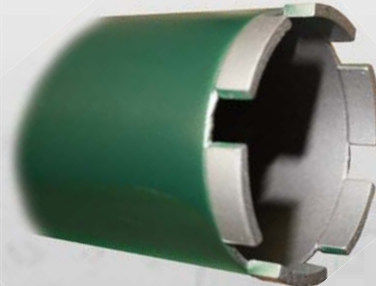
### Star Blue

Good quality diamond and good coring value.



### Specification

**GOL** - General purpose, cured concrete and hard materials



### Utility Green

Very good quality diamond and very good coring value.  
Wide spaced for fast coring.

Designed for the occasional driller with average to light duty wet drilling

Star Blue Wet Core Bits		
SIZE	BOL Cat #	List Price
1"	09978	\$96
1-1/8"	09979	102
1-1/4"	09981	118
1-1/2"	09989	123
1-3/4"	10022	137
2"	10028	157
2-1/4"	10029	169
2-1/2"	10031	189
3"	10041	222
3-1/2"	10055	257
4"	10057	298
4-1/4"	10072	320
4-1/2"	10074	366
5"	10083	389
6"	10084	469
7"	10092	659
8"	10103	684
9"	10171	826
10"	10173	834

No resegmenting available for Star Blue bits.

Utility Green Wet Core Bits		
SIZE	GOL Cat #	List Price
1"	78008	\$115
1-1/4"	78020	149
1-1/2"	78023	166
2"	14252	215
2-1/2"	14254	253
3"	14255	276
3-1/2"	14256	320
4"	14257	365
4-1/2"	14258	464
5"	14259	497
5-1/2"	14262	546
6"	14264	618
7"	78024	756
8"	78058	927
9"	78027	1,065
10"	78061	1,220
12"	78064	1,380



Water is Required to Cool Wet Core Bits



### ORDERING INFORMATION:

Star Blue & Utility Green core bits are not available with custom bonds. Note: All diameters are nominal.

### Core Bit Lengths:

Standard core length = 13"

No extra length core is available for Star Blue or Utility Green Core bits.

### Star Blue Hub Sizes:

1" to 2" = 5/8"-11 threaded hub.

2-1/4" and up = 1-1/4"-7 threaded hub.

Available only with welded threaded hub.

### Utility Green Hub Sizes:

1" to 1-1/2" = 5/8"-11 threaded hub.

1-5/8" and up = 1-1/4"-7 threaded hub.

Available only with welded threaded hub.

# STANDARD GOLD WET CORE BITS

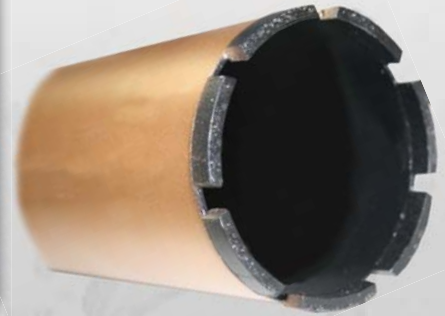


Wet Core Bits Now Arrive in Attractive Boxes with Clearly Marked Specifications



## Specification

**SMF** - General purpose in hard materials



WET CORE BITS

## Standard Gold

Better quality diamond and better coring value. Designed for average to light duty wet core drilling.



Water is Required to Cool Wet Core Bits



## ORDERING INFORMATION:

All bits may be ordered with custom bonds  
 Note: All diameters are nominal.  
 Exact tolerances upon request.

## Core Bit Lengths:

Up to 14" Diameter Core Bits Standard Core Length = 13"  
 16" Diameter Core bits Standard Core Length = 19"  
 Any length available upon request.

## Hub Sizes:

1-1/4" to 1-1/2" = 5/8"-11 threaded hub.  
 1-5/8" and up = 1-1/4"-7 threaded hub.

- See page 83 for expansion adapter Part #'s and List Prices.
- See page 83 for Extra Core Length Pricing.
- See page 89 for Resegmenting Prices.

Standard Gold Wet Core Bits				
SIZE	SMF Cat #	List Price	Open End SMF Cat #	Open End List Price
1-1/4"	44480	\$177	---	---
1-1/2"	22187	184	---	---
2"	06206	231	95848	\$204
2-1/4"	06208	246	16350	217
2-1/2"	06210	273	27820	243
2-3/4"	06213	296	16358	262
3"	06217	298	12431	280
3-1/4"	25241	343	16366	300
3-1/2"	06219	345	16368	304
4"	06225	396	06623	351
4-1/4"	06228	436	06626	390
4-1/2"	06231	491	06627	444
4-3/4"	13868	507	44818	568
5"	06235	529	36996	474
5-1/4"	27811	569	44822	452
5-1/2"	06236	621	16374	563
6"	06239	641	19209	575
6-1/4"	06241	725	96736	661
6-1/2"	06243	873	16377	806
7"	06244	940	16383	861
8"	06245	1,005	12430	902
9"	06247	1,223	16406	1,099
10"	06195	1,318	16408	1,190
12"	06201	1,478	16424	1,222
14"	06204	1,889	16432	1,410
16"	60327	2,137	---	---

# HEAVY DUTY WET CORE BITS

## Heavy Duty Orange

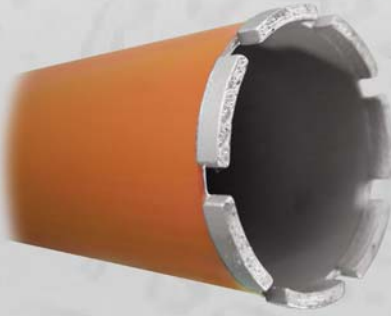
Our most popular core bit, **Heavy Duty Orange** gives excellent footage and drilling speed. Designed for all types of wet drilling in applications with light to moderate steel, **Heavy Duty Orange** is the best bit in the industry. Very high quality diamond and longer coring life.

### Specifications

**HOL** - General Purpose, Longer Life

**H38F** - Hard aggregate **H64L** - Asphalt/Block

WET CORE BITS



**Water is Required  
to Cool Wet  
Core Bits**



### ORDERING INFORMATION:

All bits may be ordered with custom bonds

Note: All diameters are nominal.

Exact tolerances upon request.

### Core Bit Lengths:

Up to 14" Diameter Core Bits Standard Core Length = 13"

16" Diameter Core bits Standard Core Length = 19"

18" Diameter Core Bits Standard Core Length = 21"

19" Diameter Core Bits Standard Core Length = 22"

20" to 30" Diameter Core bits Standard Core Length = 23"

Note: Any length available upon request.

### Hub Sizes:

1/2" to 1-1/2" = 5/8"-11 threaded hub.

1-5/8" and up = 1-1/4"-7 threaded hub.

• See page 83 for expansion adapter Part #'s and List Prices.

• See page 83 for Extra Core Length Pricing.

• See page 89 for Re-segmenting Prices.

### Heavy Duty Orange Wet Core Bits

SIZE	HOL Cat #	H38F Cat #	H64L Cat #	Heavy Duty List Price	HOL Wide Space Cat #	Heavy Duty Wide Spaced List Price	Heavy Duty Open End Cat #	Heavy Duty Open End List Price
1/2"	05099	45547	36273	\$145	---	---	---	---
5/8"	05141	39237	16875	146	---	---	---	---
3/4"	05173	45548	16877	147	---	---	---	---
7/8"	05192	45549	16886	148	---	---	---	---
1"	04812	04809	04810	154	---	---	28042	\$135
1-1/8"	04837	45550	27000	163	---	---	23312	151
1-1/4"	15509	67903	25596	189	---	---	25944	177
1-3/8"	04874	45552	36274	192	---	---	16137	180
1-1/2"	15525	45554	28619	197	---	---	05208	183
1-5/8"	04907	45555	26414	210	---	---	16056	197
1-3/4"	04910	45556	28621	219	---	---	16138	198
1-7/8"	04920	45561	20934	241	---	---	16145	219
2"	15479	45563	04934	252	20102	\$227	05212	227
2-1/4"	04959	45564	04957	270	28637	246	16148	242
2-1/2"	00004	37094	04976	303	05258	277	05216	275
2-3/4"	04992	45565	28623	322	05260	298	16160	292
3"	00005	45567	05013	356	05263	332	05220	323
3-1/4"	05032	45568	28624	409	28671	360	16189	373
3-1/2"	00006	45569	28625	412	22164	386	05224	376
4"	00007	45571	05060	476	05269	426	05228	435
4-1/4"	05079	45572	05077	513	28178	463	26118	470
4-1/2"	00008	45574	05086	586	22165	536	27383	540
5"	00009	45575	05107	623	05273	575	05232	571
5-1/2"	05117	45576	28626	724	24610	675	16194	670
6"	00010	45577	05131	751	05278	703	05238	691
6-1/4"	05144	99115	05143	839	28638	791	27782	778
6-1/2"	05151	45578	05150	1,041	28672	955	66853	979
7"	05163	45582	24977	1,055	20415	1,003	05242	989
8"	05183	45585	05180	1,094	05281	1,047	05246	999
9"	05199	45586	28627	1,322	20055	1,274	05249	1,206
10"	04822	45588	04820	1,334	21475	1,280	05206	1,214

### Heavy Duty Orange Wet Core Bits - 12" to 24"

Size	HOL Cat #	H38F Cat #	H64L Cat #	Heavy Duty List Price	Heavy Duty List Price w/ Spoke Back or Bolt On	Heavy Duty Open End HOL Cat #	Heavy Duty Open End List Price
12"	04853	45590	04848	\$1,540	\$1,824	18589	\$1,326
14"	04882	45592	24889	1,902	2,231	50495	1,658
16"	04903	45595	25130	2,174	2,547	05209	2,166
18"	04918	45598	28628	2,473	2,891	25193	2,208
20"	04947	45599	28636	2,697	3,371	16201	2,335
24"	04968	45604	04966	3,487	3,995	76449	3,056

# PREMIUM WET CORE BITS

## Premium Black

With **VERY HIGH** diamond concentration, **Premium Black** gives maximum footage and drilling speed in all types of wet drilling applications. **Good in moderate to high steel applications.** Highest quality diamond and longest coring life



**Water is Required to Cool Wet Core Bits**



### Specifications

**POL - General Purpose, Longest Life**

**P38F - Hard aggregate P64L - Asphalt/Block**

### Premium Black Wet Core Bits

SIZE	POL Cat #	P38F Cat #	P64L Cat #	Premium Black List Price	POL Wide Space Cat #	Premium Black Wide Spaced List Price	Premium Open End Cat #	Premium Open End List Price
1/2"	05826	45611	28585	\$156	---	---	---	---
5/8"	05917	05914	61808	160	---	---	---	---
3/4"	05962	05959	28587	161	---	---	---	---
7/8"	06004	06000	25115	167	---	---	---	---
1"	05293	05288	19871	170	---	---	06022	\$156
1-1/8"	05338	05333	64328	186	---	---	06030	175
1-1/4"	05381	05375	22003	219	---	---	06032	187
1-3/8"	05404	23889	36271	222	---	---	17181	209
1-1/2"	05441	05430	05438	226	---	---	06035	212
1-5/8"	05472	36741	36267	264	---	---	17198	248
1-3/4"	05483	82466	28595	271	---	---	18673	250
1-7/8"	05509	45612	28596	280	---	---	17200	256
2"	05529	21720	05525	288	18517	\$258	06041	261
2-1/4"	05571	27749	23771	309	06159	279	24152	282
2-1/2"	05607	21771	28597	321	06160	315	06051	293
2-3/4"	05629	45613	28598	368	20036	338	24153	337
3"	05661	05646	21246	413	06165	383	06062	381
3-1/4"	05688	45615	05686	448	28609	415	36266	416
3-1/2"	05709	93151	28599	458	06169	445	06077	419
4"	05761	05744	05753	566	06175	498	06087	466
4-1/4"	05791	45995	05788	605	28610	545	06095	562
4-1/2"	05805	05800	23173	658	18400	620	06097	614
5"	05843	05833	24580	720	06182	660	06105	667
5-1/2"	05867	45619	28600	834	18754	774	06109	779
6"	05892	05881	05886	867	06187	809	06114	807
6-1/4"	05921	45620	28601	933	28611	878	20662	870
6-1/2"	05927	45621	28602	1,108	17898	1,056	30213	1,045
7"	05945	05937	28603	1,170	18209	1,108	06118	1,094
8"	05984	05972	05980	1,206	18210	1,152	06121	1,111
9"	06013	45623	28604	1,468	18211	1,410	06124	1,353
10"	05306	45624	28605	1,520	18035	1,458	06025	1,399

### Premium Black Wet Core Bits - 12" to 24"

Size	POL Cat #	P38F Cat #	P64L Cat #	Premium Black List Price	Premium List Price w/ Spoke Back or Bolt On	Premium Black Open End POL Cat #	Premium Black Open End List Price
12"	05361	45625	05359	\$1,699	\$2,360	06031	\$1,450
14"	05417	48288	28606	2,098	2,429	06033	1,834
16"	05462	45626	28607	2,322	2,700	06037	1,929
18"	05498	45628	05496	2,720	3,142	26686	2,501
20"	05536	69727	28608	2,995	3,461	84014	2,756
24"	05584	33325	05583	3,746	4,259	06046	3,622

### ORDERING INFORMATION:

All bits may be ordered with custom bonds

Note: All diameters are nominal.

Exact tolerances upon request.

### Core Bit Lengths:

Up to 14" Diameter Core Bits Standard Core Length = 13"

16" Diameter Core bits Standard Core Length = 19"

18" Diameter Core Bits Standard Core Length = 21"

19" Diameter Core Bits Standard Core Length = 22"

20" to 30" Diameter Core bits Standard Core Length = 23"

Note: Any length available upon request.

### Hub Sizes:

1/2" to 1-1/2" = 5/8"-11 threaded hub.

1-5/8" and up = 1-1/4"-7 threaded hub.

• See page 83 for expansion adapter Part #'s and List Prices.

• See page 83 for Extra Core Length Pricing.

• See page 89 for Re-segmenting Prices.



# PROFESSIONAL WET CORE BITS

The Industry Standard in High Quality Coring



Water is Required to Cool Wet Core Bits

WET CORE BITS



**Specification**  
UOF - Extremely hard aggregate  
UOL - General purpose

### Supreme Silver

Highest high quality diamond concentration meant for smaller holes in **very heavy steel and extremely hard aggregate.**

\* All sizes available in UOF or UOL.



**Specification**  
SPOL- General purpose

### Super Premium Red

Higher quality diamond with wide spaced segments for **fast drilling in moderate steel.**

Tall .400" segment for **Longer life.**



**Specification**  
TOL- General purpose

### Pro Blue

Very high quality diamond with wide spaced segments for **very fast drilling in heavy steel and hard aggregate.**

#### Supreme Silver Wet Core Bits

SIZE	UOF Cat #	UOL Cat #	List Price
1/2"	07190	07191	\$168
5/8"	07200	13698	172
3/4"	07208	07209	183
7/8"	07220	07222	186
1"	07097	07098	191
1-1/8"	07110	07113	232
1-1/4"	07120	07121	259
1-3/8"	07127	14699	264
1-1/2"	07137	07138	282
1-5/8"	07146	20718	329
1-3/4"	07154	07155	334
1-7/8"	07160	24067	343
2"	07165	07166	366

#### Super Premium Wet Core Bits

SIZE	SPOL Cat #	List Price	Open End Cat #	Open End List Price
1"	06629	\$180	17818	\$169
1-1/4"	21128	234	17855	221
1-1/2"	06639	242	17865	230
1-3/4"	06640	294	34429	271
2"	06641	311	70389	286
2-1/2"	06647	344	06686	316
3"	06650	444	30001	411
3-1/2"	06652	479	22377	440
4"	06654	546	70466	506
4-1/2"	06660	703	75339	658
5"	06662	779	73215	727
6"	06665	927	06700	864
7"	06670	1,239	17923	1,164
8"	06672	1,346	77867	1,250
9"	06676	1,602	17947	1,484
10"	06631	1,737	17950	1,613

Our **Super Premium Red & Pro Blue** and bits are designed with the professional driller in mind. They have a wider spaced segment design which delivers more power to the cutting surface. This additional power results in faster coring and higher productivity.

#### Pro Blue Wet Core Bits

SIZE	TOL Cat #	List Price	Open End Cat #	Open End List Price
1"	06712	\$187	06920	\$176
1-1/8"	06725	218	--	---
1-1/4"	06732	250	17687	238
1-3/8"	20645	254	---	---
1-1/2"	06740	259	06923	244
1-5/8"	06743	278	---	---
1-3/4"	19920	302	17701	279
1-7/8"	81099	311	---	---
2"	06753	325	06927	300
2-1/2"	06760	374	06930	345
3"	06771	458	06935	425
3-1/2"	06781	519	06939	478
4"	06791	579	06941	537
4-1/2"	06802	716	06943	667
5"	06808	847	06946	792
5-1/2"	06812	889	48095	863
6"	06819	949	06949	885
6-1/2"	06824	1,120	48101	934
7"	06826	1,313	36275	1,235
8"	06833	1,499	06951	1,399
9"	06841	1,751	36276	1,633
10"	06715	1,799	06921	1,673

#### ORDERING INFORMATION:

All bits may be ordered with custom bonds  
Note: All diameters are nominal.  
Exact tolerances upon request.

- See page 83 for expansion adapters
- See page 83 for Extra Core Length Pricing.
- See page 89 for Re-segmenting Prices.

**Core Bit Lengths:** Standard Core Length = 13"

Note: Any length available upon request.

**Hub Sizes:** 1/2" to 1-1/2" = 5/8"-11 threaded hub.  
1-5/8" and up = 1-1/4"-7 threaded hub.

# LARGE DIAMETER WET CORE BITS

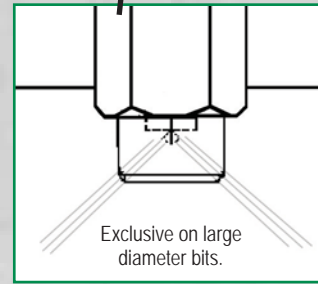
The Industry Standard in High Quality Coring



Water is Required  
to Cool Wet  
Core Bits



Spoked Hub



### Large Diameter Wet Core Bits

Large diameter bits include a spoke back hub that has a built in 45 degree radial water sprayer which gets water to the tube and segments where it is needed.



WET CORE BITS

### HOL - General Purpose, Longer Life

#### Heavy Duty Orange Large Diameter Wet Core Bits

SIZE	Number of Segs	HD Orange HOL Cat #	Spoked Hub List Price	Reseg List Price
26"	40	04986	\$4,891	\$3,913
28"	44	04996	5,449	4,359
30"	47	05023	6,061	4,849
32"	49	05031	6,544	5,235
34"	52	28641	7,069	5,655
36"	56	25778	7,634	6,107
38"	60	28642	8,141	6,513
40"	62	28643	8,548	6,838
42"	65	28644	9,439	7,551
44"	68	41642	9,910	7,928
46"	71	41643	10,406	8,325
48"	74	28055	11,017	8,814

### POL - Hard Aggregate, Longest Life

#### Premium Black Large Diameter Wet Core Bits

SIZE	Number of Segs	Premium POL Cat #	Spoked Hub List Price	Reseg List Price
26"	40	05622	\$5,180	\$4,144
28"	44	05632	5,720	4,576
30"	47	05671	6,385	5,108
32"	49	05682	6,886	5,509
34"	52	05696	7,420	5,936
36"	56	05721	7,981	6,385
38"	60	05740	8,601	6,881
40"	62	24832	8,945	7,156
42"	65	05781	9,876	7,901
44"	68	05797	10,337	8,270
46"	71	32564	10,815	8,652
48"	74	05817	11,464	9,171

### ORDERING INFORMATION:

All bits may be ordered with custom bonds.

#### Standard Core Length:

20" to 30" = 23"

31" to 72" = 35"

**Note:** Lengths longer than the standard are quoted on an individual basis.

#### Hub Sizes:

- 1-1/4"-7 threaded hub unless otherwise specified.
- 1-7/8"-7 threaded hub available upon request

**Note:** All diameters are nominal. Exact tolerances upon request.

# IMPREGNATED B & SUPER B BITS

Segment Ring Allow Less Segment Loss in Concrete with Steel and Cable

WET CORE BITS



**Specification**

**B** - Concrete with light steel and cable

**Impregnated Yellow**

Continuous crown segment for applications with prestressed cable, loose rebar and wire mesh.



Water is Required to Cool Wet Core Bits

**Specification**

**SB** - Concrete with light steel and cable with high segment for longer life

**Impregnated Super B Red**

Taller continuous crown segment for applications with prestressed cable, loose rebar and wire mesh.

**Impregnated Yellow Wet Core Bits**

SIZE	B Cat #	List Price	Open End Cat #	Open End List Price
1"	04624	\$194	18054	\$179
1-1/8"	18628	209	18064	193
1-1/4"	04632	210	18107	195
1-3/8"	20172	224	18066	209
1-1/2"	04636	240	18174	224
1-5/8"	28640	260	18180	242
1-3/4"	17937	277	18205	250
1-7/8"	04640	279	18229	252
2"	04643	288	35764	260
2-1/4"	04645	321	18262	288
2-1/2"	04649	352	35765	319
2-3/4"	04652	377	18278	341
3"	04657	401	28140	363
3-1/4"	04659	428	18284	390
3-1/2"	04661	446	71036	399
4"	04664	496	75563	448
4-1/4"	04666	557	20549	508
4-1/2"	04669	612	78256	559
5"	04671	670	19231	609
5-1/2"	04674	725	18263	662
6"	04677	783	57334	712
6-1/4"	04678	915	20550	845
6-1/2"	19360	939	36294	865
7"	04681	1,019	18912	929
8"	04683	1,075	36244	962
9"	04685	1,289	19232	1,153
10"	04626	1,587	18913	1,444

**Impregnated Super B Red Wet Core Bits**

SIZE	SB Cat #	List Price
1"	06249	\$196
1-1/8"	38042	210
1-1/4"	19343	212
1-3/8"	58412	231
1-1/2"	06252	243
1-3/4"	93190	285
2"	06255	309
2-1/2"	06258	342
2-3/4"	25207	393
3"	06263	428
3-1/2"	06265	474
4"	06268	565
4-1/4"	37666	591
4-1/2"	33912	641
5"	06271	715
5-1/2"	24589	776
6"	06274	835
7"	33287	1,087
8"	06276	1,148
10"	58081	1,440



**ORDERING INFORMATION:**

Not available with extra core length or custom bonds

**Note:** All diameters are nominal. **Bit Core Length = 13"**

**Hub Sizes:**

1" to 1-1/2" = 5/8"-11 threaded hub. 1-5/8" and up = 1-1/4"-7 threaded hub.

See page 83 for expansion adapter Part Numbers and List Prices

# PRECAST CORE BITS

Close Segments Allow Less Segment Loss In Precast Concrete with Cable



Water is Required to Cool Wet Core Bits



### Specification

**HOL** - General Purpose, Fast Coring, Longer Life

Very high quality diamond and longer coring life.



### Specification

**POL** - General Purpose, Fast Coring, Longest Life

Highest quality diamond and longest coring life.

PRECAST CORE BITS

## Precast Core Bits

- Made to resist segment failure from coring through pre-tensioned wire in precast materials

Heavy Duty Orange Precast Core Bits		
SIZE	HOL Cat #	List Price
1"	41210	\$165
1-1/4"	41211	216
1-1/2"	41212	224
1-3/4"	41213	246
2"	41214	260
2-1/2"	41215	342
3"	41216	402
3-1/2"	41217	465
4"	41218	540
4-1/2"	41219	661
5"	41220	705
6"	41221	849
7"	41222	1,195
8"	41223	1,239
9"	41224	1,499
10"	41225	1,511

Premium Black Precast Core Bits		
SIZE	POL Cat #	List Price
1"	41226	\$191
1-1/4"	41227	245
1-1/2"	41228	256
1-3/4"	41229	307
2"	41230	326
2-1/2"	41231	363
3"	41232	467
3-1/2"	41233	518
4"	41234	641
4-1/2"	41235	747
5"	41236	815
6"	41237	982
7"	41238	1,325
8"	41239	1,369
9"	41240	1,662
10"	41241	1,723

### ORDERING INFORMATION:

All bits may be ordered with custom bonds  
 Note: All diameters are nominal.  
 Exact tolerances upon request.

### Core Bit Lengths: Standard Core Length = 13"

Note: Any length available upon request.  
 • See page 83 for Extra Core Length Pricing.  
 • See page 89 for Re-segmenting Prices.

### Hub Sizes:

1" to 1-1/2" = 5/8"-11 threaded hub.  
 1-5/8" and up = 1-1/4"-7 threaded hub.

# TURBO WET CORE BITS

Unique Segment Designs for Fast, Long Life Core Drilling



Water is Required  
to Cool Wet  
Core Bits



TURBO CORE BITS



**Specification**

**TBOWL**- General purpose, moderate steel

**Star Blue**

Good quality diamond and good coring value.  
Serrated segment for faster cutting



**Specification**

**THOWL**- General purpose, moderate steel, Longer Life

**Heavy Duty Orange**

Very high quality diamond and longer coring life in **medium aggregate concrete with moderate steel.**  
Serrated segment for faster coring.

Star Blue Turbo Bits		
SIZE	TBOWL Cat #	List Price
2"	10185	\$141
2-1/2"	10186	172
3"	10237	194
3-1/2"	10238	241
4"	10266	267
4-1/2"	10272	287
5"	10290	309
6"	10305	380
8"	10307	601
10"	10323	740

Heavy Duty Orange Turbo Bits		
SIZE	THOWL Cat #	List Price
1-1/2"	06885	\$168
1-3/4"	35416	196
2"	06888	226
2-1/4"	06889	270
2-1/2"	06893	276
3"	06896	310
3-1/4"	93299	370
3-1/2"	06898	410
4"	06901	426
4-1/4"	06902	454
4-1/2"	06905	460
5"	06907	494
5-1/2"	23868	509
6"	06910	607
7"	06911	756
8"	06914	961
9"	06915	1,059
10"	06880	1,185
12"	06882	1,369
14"	65118	1,844
16"	38999	2,120

**ORDERING INFORMATION:**

**Star Blue** core bits are not available with custom bonds.

**Heavy Duty Orange** core bits may be ordered with custom bonds.

**Note:** All diameters are nominal. **Heavy Duty Orange** core bits may be ordered with exact tolerances.

**Core Bit Lengths:** (Note: Extra length core is not available for **Star Blue** core bits.)

Up to 14" Diameter Standard Core Length = 13"

16" Diameter Standard Core Length = 19"

**Star Blue Hub Sizes:**

2" = 5/8"-11 threaded hub. 2-1/2" and up = 1-1/4"-7 threaded hub.

Available only with welded threaded hub.

**Heavy Duty Orange Hub Sizes:**

1/2" to 1-1/2" = 5/8"-11 threaded hub. 1-5/8" and up = 1-1/4"-7 threaded hub.

See Page 83 for Extra Core Length Pricing See Page 89 for Re-segmenting Prices

Re-segmenting not available for **Star Blue** Turbo Bits

# TURBO WET CORE BITS

Unique Segment Designs for Fast, Long Life Core Drilling



Water is Required  
to Cool Wet  
Core Bits



### Specification

**TPOWL**- General purpose with high steel, Longest Life

### Premium Black

Highest quality diamond and longest coring life in **medium aggregate concrete with heavy steel**.  
Serrated segment for faster coring.

Premium Black Turbo Bits		
SIZE	TPOWL Cat #	List Price
1-1/2"	06957	\$206
1-3/4"	30049	237
2"	06960	275
2-1/4"	06962	288
2-1/2"	06965	307
3"	06969	368
3-1/4"	44618	404
3-1/2"	06972	458
4"	06974	477
4-1/4"	06977	530
4-1/2"	06978	536
5"	06979	569
5-1/2"	06981	593
6"	06982	627
7"	06987	864
8"	06988	1,063
9"	16094	1,218
10"	06955	1,360
12"	06956	1,496
14"	23026	1,832
16"	24481	2,532

- See page 83 for Extra Core Length Pricing.
- See page 89 for Re-segmenting Prices.



### Specification

**TSPOL** - General purpose moderate steel, fast  
**TSP38L** - Hard aggregate, fast coring  
**TSP64L** - Asphalt & block, fast coring  
**TSPSAG3+** - Fast coring in hard aggregate with moderate steel

### Super Premium Red

High diamond concentration and quality for very long life. **Fastest coring bit in various applications with heavy steel**. Extra high diamond depth of .400" for the longest life and fastest core.

Super Premium Red Turbo Bits					
SIZE	TSPOL Cat #	TSP38L Cat #	TSP64L Cat #	TSPSAG3+ Cat #	List Price
2"	84820	45632	17056	77374	\$311
2-1/2"	84821	45633	84853	77774	344
3"	84822	54702	17057	77219	444
3-1/2"	84823	58156	20939	77882	479
4"	84824	45634	84856	77474	546
4-1/2"	84825	45635	20942	78400	703
5"	84826	45639	17058	77475	779
6"	84827	58158	17063	77476	927
7"	84828	45642	20943	78082	1,239
8"	84829	45644	20945	77372	1,346
9"	84830	45647	20946	78171	1,602
10"	84831	45650	84863	77373	1,737



Serrated segment design for less surface to surface contact



Segment Top View



Ribbed segment design for a faster cut - saving you time and money



Segment Top View

### Core Bit Lengths:

Up to 14" Diameter Standard Core Length = 13"  
 16" Diameter Standard Core Length = 19"  
 Note: Any length available upon request.

**Hub Sizes:** 1-1/2" to 1-1/2" = 5/8"-11 threaded hub.  
 1-5/8" and up = 1-1/4"-7 threaded hub.

### ORDERING INFORMATION:

All bits may be ordered with custom bonds  
 Note: All diameters are nominal.  
 Exact tolerances upon request.

# THINWALL WET CORE BITS

Light Weight Bits for Fast, Handheld Coring



Water is Required to Cool Wet Core Bits



### SPECIFICATIONS:

**POL & UOL** - General purpose, fast coring

**P38Z & U38Z** - Fast coring in harder materials and stone

### Measurements of Thinwall Core Bits

Outside Diameter	Inside Diameter	Outside Diameter	Inside Diameter
1/2"	.330	1-3/8"	1.200
5/8"	.450	1-1/2"	1.325
3/4"	.575	1-5/8"	1.450
7/8"	.700	1-3/4"	1.680
1"	.830	1-7/8"	1.700
1-1/8"	.950	2"	1.830
1-1/4"	1.080	2-1/2"	1.980

### M33 Thinwall Hand Held

- Bits Designed for use on the only on the WEKA DK11
- 3-Threaded special hub designed for easy core removal and fast bit changes.

**POL & UOL** - General purpose, fast coring

**P38Z & U38Z** - Fast coring in harder materials and stone

### Premium Black Thinwall Handheld Core Bits With M33 Hubs

SIZE	POL Cat #	P38Z Cat #	Premium List Price
1/2"	46751	46768	\$131
5/8"	46749	46772	140
3/4"	86805	46775	153
7/8"	86806	46777	162
1"	86807	46785	171
1-1/8"	86808	46790	182
1-1/4"	86809	46791	193
1-3/8"	22223	46792	203

### Supreme Silver Thinwall Handheld Core Bits with M33 Hubs

SIZE	UOL Cat #	U38Z Cat #	Supreme List Price
1/2"	46758	46796	\$157
5/8"	46759	46797	169
3/4"	46760	46802	183
7/8"	34774	46803	199
1"	46763	46810	210
1-1/8"	46764	46812	230
1-1/4"	46766	46813	239
1-3/8"	46767	46855	244

M33 threaded spindle for DK11 - Cat # 46953 - \$160

1.250-7 female to M33 x 2 male adapter - Cat # 28041 - \$55

Hilti® DD-EC1 to M33 male adapter - Cat # 30354 - \$124

### Premium Black and Supreme Silver Thinwall Handheld Core Bits

SIZE	POL Cat #	P38Z Cat #	Premium List Price	UOL Cat #	U38Z Cat #	Supreme List Price
1/2"	07061	23273	\$122	28516	37777	\$145
5/8"	07065	23322	130	28517	52665	159
3/4"	07071	76132	145	28518	37778	172
7/8"	07077	07075	154	28519	65957	185
1"	07017	20184	161	28520	62004	196
1-1/8"	07021	23260	177	28521	37967	215
1-1/4"	07027	19053	186	28522	83931	225
1-3/8"	07031	20676	190	28523	77558	230
1-1/2"	07037	07035	194	28524	77618	234
1-5/8"	18222	36789	198	28525	95572	237
1-3/4"	07043	21854	202	28526	38966	241
1-7/8"	18223	27647	206	28527	84008	246
2"	07050	07047	209	28528	36236	251
2-1/4"	17941	07052	217	28529	45652	263
2-3/8"	18224	27139	251	28530	45653	303
2-1/2"	17948	18927	259	28531	58376	313
2-3/4"	18225	26817	274	28532	45654	333
3"	17827	22307	287	28533	45491	346
3-1/2"	17911	25670	342	57545	55332	393
4"	17828	22628	381	28534	79364	459
5"	17829	39599	520	28535	45658	625
6"	17940	27145	625	28536	45660	755

### ORDERING INFORMATION:

All thinwall bits have a 5/8"-11 hub. Other specifications available upon request.

Core bits have a standard 13" core length.

Add \$12 for Built-In BANTAM Hub

See Page 83 for Extra Core Length Pricing

Note: All diameters are nominal. Exact tolerances upon request.

### CORE BITS FOR TILE, MARBLE & GRANITE

**SPECIFICATION:**  
**P28Z** - Very hard materials, fast coring



### Premium Black Stone Bits

Wet core bits for drilling marble and granite. Core length of 2" allows an accurate hole in hard materials. Crown style for a smooth finish. 3" overall length.

### Premium Black Tile Bits

Wet thinwall core bits with 2" core length for fast, smooth coring in tile. The soft bond handles very hard tile and the thin crown segment creates a nice finished core. 3" overall length.

### Premium Black Bits for Natural Stone

SIZE	P28Z Cat #	List Price
1"	28026	\$214
1-1/4"	28027	279
1-3/8"	28029	281
1-1/2"	28033	286
1-3/4"	28034	342

### Premium Black Tile Bits

SIZE	P28Z Cat #	List Price
1"	73910	\$209
1-1/4"	73913	240
1-3/8"	73914	246
1-1/2"	73924	251
1-3/4"	73915	262
2"	73923	270

### Straight shank adapters & water swivels

3/8" SS to 5/8-11 adapter - Cat #01913 - \$31.00

1/2" SS to 5/8-11 adapter - Cat # 01899 - \$31.00

5/8" SS to 5/8-11 adapter - Cat # 01936 - \$42.00

375HD water swivel 5/8-11 to 5/8-11 with water valve

Cat # 01885 - List Price: \$224.00

THINWALL CORE BITS

# PLATED HOLE SAW BITS

## Electroplated Diamond Bits for Tile, Stone and More

### Materials:

- Tile - all types
- Marble
- Granite
- Glass
- Fiberglass
- Pottery
- Mirror
- Slate

### Applications:

- Faucet Installations
- Towel Bars
- Shower Doors
- Shelving Brackets
- Toilet Anchors
- Plumbing Pipe Holes
- Electrical Outlets
- and More!



Water is Required for Cooling

### 10 Piece Set

Includes: 5/8", 7/8", 1", 1-1/4", 1-3/8", 1-1/2", 2", 3-1/4" bits and precision pilot with carbide center bit



### 14 Piece Set

Includes: 5/16", 5/8", 7/8", 1", 1-1/4", 1-3/8", 1-1/2" 2", 2-3/8", 2-7/8", 6" carbide file, universal guide with suction cup and water pump



PLATED BITS

### Core Bore Plated Hole Saw Bits Easily Fit Into Standard Rotary Drills and Are Simple To Use



\* Resegmenting, extra core length and custom bonds are **NOT** available

### 5 Piece Set with Universal Guide

Universal guides can help you keep your bit straight and aligned with your desired drilling spot  
Includes: 1/8", 1/4", 5/16", 3/8" 1/2" and universal guide



Plated hole saw bits are self-sharpening. You get the entire life of the diamond due to the electroplated technology



### Suction Ring Set

These trap rings prevent the use of putty dam. Putty dam is clay or putty rolled into a ring to prevent water from escaping the drilling area. This can be messy and time consuming. Water trap rings are recommended for keeping your drilling area cleaner.

### Plated Hole Saw Bits - Individual

SIZE	Cat #	List Price
1/8"	04235	\$15
1/4"	04236	23
5/16"	07344	27
3/8"	04237	32
1/2"	04239	49
5/8"	09324	50
7/8"	09326	52
1"	04240	58
1-1/4"	04241	64
1-3/8"	04243	73
1-1/2"	04248	74
1-5/8"	09330	89
2"	04250	102
2-1/4"	04251	118
2-3/8"	04253	149
2-1/2"	04254	157
2-7/8"	09334	162
3"	04255	167
3-1/4"	09335	176

### Plated Hole Saw Sets

DESCRIPTION	Cat #	List Price
5 piece set with universal guide	04257	\$163
10 piece set with pilot adapter	03287	437
14 pieces set with guide, water bottle suction rings	04258	816
1-1/2" & 3" set	03288	33

# DRY DIAMOND CORE BITS

Core Drill Without Water



Dry bits are used with intermittent cuts allowing air to cool the bit  
**NO WATER NEEDED**



DRY CORE BITS

## Star Blue

### DRY HOLE SAW

**DB** - Block and soft brick - not for use on concrete

Good quality diamond and good coring value

## Heavy Duty Orange

### DRY HOLE SAW

**DH** - Block and soft brick - not for use on concrete

Very high quality diamond and longer coring life

#### Star Blue Dry Hole Saw Bits

SIZE	DB Cat #	Max RPM/ Min RPM	Drill/Grinder Min. Amps	List Price
7/8"	35377	6000/2300	6	\$90
1"	35385	6000/2300	6	92
1-1/4"	35390	6000/2300	6	100
1-1/2"	35392	5000/1600	7	115
1-3/4"	35399	5000/1600	7	122
2"	35406	5000/1200	7	137
2-1/4"	35437	5000/1200	7	143
2-1/2"	35440	5000/1200	7	148
3"	35444	5000/800	7	193
3-1/2"	35452	5000/800	10	217
4"	35453	5000/700	10	230
4-1/2"	35459	5000/700	10	278
5"	35478	3500/700	10	320
6"	35479	2500/600	10	398

#### Heavy Duty Orange Dry Hole Saw Bits

SIZE	DH Cat #	Max RPM/ Min RPM	Drill/Grinder Min. Amps	List Price
7/8"	04771	6000/2300	6	\$139
1"	04706	6000/2300	6	142
1-1/4"	04711	6000/2300	6	154
1-1/2"	04717	5000/1600	7	177
1-3/4"	04720	5000/1600	7	187
2"	00011	5000/1200	7	210
2-1/4"	04727	5000/1200	7	220
2-1/2"	00012	5000/1200	7	227
3"	00013	5000/800	7	297
3-1/2"	00014	5000/800	10	334
4"	04745	5000/700	10	354
4-1/2"	04751	5000/700	10	428
5"	04756	3500/700	10	493
6"	04764	2500/600	10	613

#### Dry Hole Saw Notes:

- Not all types of brick and block can be drilled - *please consult factory.*
- 9" drilling depth and 5/8"-11 hub
- Jacobs Chuck adapter available for hand held rotary drills 5/8"-11 thread to straight shank
- Custom bonds, extra core length and resegmenting is not available on dry core bits.

#### Adapters for Dry Bits

Description	Part #	Cat #	List Price
5/8"-11 pilot adapter	4400035	01902	\$41.00
1/2" straight shank pilot adapter	4400034	01901	41.00
1/2" carbide pilot drill with A-Taper	1400029	00033	53.00

# DRY DIAMOND CORE BITS

Core Drill Without Water



Dry bits are used with intermittent cuts allowing air to cool the bit  
**NO WATER NEEDED**



## Premium Black DRY HOLE SAW

**DP** - Brick/block and non-reinforced concrete

Highest quality diamond and Longest life

Wider segments with heavier barrel wall to withstand harder brick and prevent segment loss.

## Heavy Duty Orange DRY VACUUM BIT

**DVH** - Cured concrete & masonry

Very high quality diamond and Longer Life

### Dry Vacuum Bit Notes:

- Do not use in applications with steel heavier than wire mesh
- 9" drilling depth with 1.250"-12 threaded hub



DRY CORE BITS

### Premium Black Dry Hole Saw Bits

SIZE	DP Cat #	Max RPM/ Min RPM	Drill/Grinder Min. Amps	List Price
7/8"	46326	6000/2300	6	\$159
1"	46327	6000/2300	6	162
1-1/4"	46328	6000/2300	6	174
1-1/2"	46329	5000/1600	7	202
1-3/4"	46330	5000/1600	7	214
2"	46331	5000/1200	7	238
2-1/4"	46332	5000/1200	7	251
2-1/2"	46333	5000/1200	7	260
3"	46334	5000/800	7	340
3-1/2"	46335	5000/800	10	382
4"	46336	5000/700	10	404
4-1/2"	46337	5000/700	10	488
5"	46338	3500/700	10	562
6"	46339	2500/600	10	698

### Dry Hole Saw Notes:

- Not all types of brick and block can be drilled - *please consult factory.*
- 9" drilling depth and 5/8"-11 hub
- Jacobs Chuck adapter available for hand held rotary drills 5/8"-11 thread to straight shank
- Custom bonds, extra core length and resegmenting is not available on dry core bits.

### Heavy Duty Orange Dry Vacuum Bits

SIZE	DVH Cat #	Max RPM/ Min RPM	List Price
1-1/2"	04775	5000/1600	\$177
1-3/4"	04777	5000/1600	187
2"	04780	5000/1200	210
2-1/4"	04782	5000/1200	220
2-1/2"	04785	5000/1200	227
3"	04789	5000/800	297
3-1/2"	04793	5000/800	334
4"	04796	5000/700	354
4-1/2"	04799	5000/700	428
5"	04802	3500/700	493
6"	04805	2500/600	613

### Dry Vacuum Bits Must Use a Dry Vacuum Swivel

5/8"-11 to 1.250"-12 Vacuum Swivel Assembly  
Vacuum attachment fits a standard shop vacuum  
Cat # 01950, Part # 4400125 **\$260.00**

Swivel Extension - (12")  
Cat # 01951, Part # 4400126 **\$66.00**



**DRY VACUUM BIT ADAPTER**  
For use with a standard shop vacuum to remove dust and debris.  
Great for use in clean areas where dust control is required.

# THREADED CORE BITS

## Unique Core Bits for Specialized Applications



Water is Required  
for Cooling



THREADED CORE BITS



### Threaded Core Bits

Allows increased range of drilling depth with continuous tubing threaded bits and barrels. Additional barrel lengths can be added as you drill deeper, similar to oil drilling. Standard threaded bits have a core length of 12" and extra barrel lengths are available in 12", 24", 36" and 48". Segment width of threaded bits are .187" for bits 1-1/2" to 6-1/2". Threaded bits 7" to 10" have .250" segment width.

#### Specifications:

- HOL** - General purpose, cured concrete with moderate steel
- POL** - General purpose, concrete with heavy steel, long life
- P38F** - Very hard aggregate with heavy steel
- UOF** - High diamond concentration for concrete with extremely high steel content

Threaded Bits							
SIZE	HD Orange HOL Cat #	HD Orange List Price	Premium Black POL Cat #	Premium Black P38F Cat #	Premium Black List Price	Supreme Silver UOF Cat #	Supreme Silver List Price
1-1/2"	44577	\$285	06134	45661	\$336	29515	\$422
2"	18073	362	06138	45662	444	07233	588
2-1/4"	36614	371	06140	45665	456	71468	609
2-1/2"	05252	424	06143	45667	532	18259	668
2-3/4"	05253	449	23245	45668	541	18260	680
3"	28541	478	06144	68191	599	18261	761
3-1/4"	---	---	28546	89512	652	---	---
3-1/2"	17967	541	06146	26484	681	18297	771
4"	05254	621	06148	97678	773	83914	843
4-1/4"	---	---	87522	45672	863		
5"	45315	777	06150	45673	969		
5-1/2"	---	---	28548	45675	1,059		
6"	28543	913	06151	45680	1,154		
6-1/4"	---	---	50412	45681	1,212		
6-1/2"	69850	1,015	28550	45684	1,324		
7"	52319	1,155	06152	45685	1,425		
8"	28186	1,173	06154	45686	1,442		
9"	50411	1,384	28551	92032	1,711		
10"	79382	1,539	06129	45690	1,840		

# THREADED CAPS AND BARRELS

For Deep Hole Drilling



THREADED BARRELS

Threaded Caps & Threaded Barrels

DIAMETER	Threaded Cap Part #	1-1/4"-7 Threaded Cap List Price	12" Core Barrel Part #	12" Core Barrel List Price	24" Core Barrel Part #	24" Core Barrel List Price	36" Core Barrel Part #	36" Core Barrel List Price	48" Core Barrel Part #	48" Core Barrel List Price
1"	06862	<b>\$145</b>	60334	<b>\$143</b>	56985	<b>\$157</b>	62087	<b>\$235</b>	91894	<b>\$248</b>
1-1/4"	06864	<b>149</b>	85085	<b>145</b>	76835	<b>161</b>	80066	<b>242</b>	62088	<b>258</b>
1-1/2"	06865	<b>151</b>	47307	<b>147</b>	52106	<b>168</b>	47312	<b>252</b>	54789	<b>272</b>
2"	06867	<b>155</b>	47308	<b>149</b>	47773	<b>170</b>	47774	<b>254</b>	53897	<b>275</b>
2-1/4"	06868	<b>158</b>	58974	<b>218</b>	58975	<b>242</b>	82301	<b>265</b>	95136	<b>288</b>
2-1/2"	06869	<b>231</b>	49936	<b>221</b>	49937	<b>249</b>	49938	<b>276</b>	65808	<b>310</b>
2-3/4"	54344	<b>239</b>	60161	<b>225</b>	54343	<b>255</b>	85872	<b>287</b>	69504	<b>318</b>
3"	06870	<b>241</b>	47309	<b>227</b>	49917	<b>258</b>	47314	<b>289</b>	47509	<b>321</b>
3-1/4"	73973	<b>247</b>	85705	<b>233</b>	89515	<b>270</b>	73974	<b>308</b>	73975	<b>345</b>
3-1/2"	06872	<b>261</b>	49912	<b>239</b>	49913	<b>282</b>	49914	<b>325</b>	57188	<b>370</b>
4"	06873	<b>265</b>	47310	<b>241</b>	49925	<b>304</b>	47315	<b>359</b>	54236	<b>414</b>
4-1/4"	58973	<b>271</b>	58972	<b>243</b>	58971	<b>340</b>	47874	<b>445</b>	25922	<b>551</b>
4-1/2"	49895	<b>283</b>	49919	<b>249</b>	49920	<b>355</b>	49921	<b>469</b>	72869	<b>581</b>
5"	06874	<b>301</b>	47588	<b>275</b>	48713	<b>376</b>	49931	<b>500</b>	56475	<b>623</b>
5-1/2"	58910	<b>310</b>	58911	<b>301</b>	58912	<b>473</b>	25926	<b>644</b>	25930	<b>816</b>
6"	06875	<b>329</b>	47311	<b>350</b>	49933	<b>570</b>	47316	<b>790</b>	56078	<b>1,010</b>
6-1/4"	19357	<b>331</b>	20976	<b>399</b>	19348	<b>667</b>	58927	<b>936</b>	20918	<b>1,205</b>
6-1/2"	49088	<b>433</b>	49087	<b>892</b>	25933	<b>1,070</b>	25934	<b>1,248</b>	97036	<b>1,426</b>
7"	06876	<b>442</b>	62372	<b>987</b>	86403	<b>1,259</b>	62373	<b>1,532</b>	71541	<b>1,804</b>
8"	06877	<b>469</b>	53570	<b>994</b>	54813	<b>1,272</b>	47479	<b>1,541</b>	51261	<b>1,817</b>
9"	55077	<b>477</b>	82978	<b>1,001</b>	81181	<b>1,289</b>	55076	<b>1,576</b>	92031	<b>1,863</b>
10"	06863	<b>483</b>	68676	<b>1,022</b>	49465	<b>1,331</b>	49947	<b>1,639</b>	49464	<b>1,947</b>

# CARBIDE REBAR & PLATE CUTTER CORE BITS

Carbide Inserts on a Thick Core Barrel Allow Coring Rebar and Plate Steel

CARBIDE CORE BITS



## Carbide Rebar & Plate Cutters

Designed to cut through rebar or plate steel after a diamond core bit has drilled through the concrete.

Carbide inserts are brazed into the core barrel. These specialized bits must be used with water to keep the bit cool while drilling in steel.

13" Standard core length

Carbide Rebar and Plate Cutter Core Bits						
SIZE	Rebar Cutter Cat #	Rebar Cutter List Price	# of Inserts	Plate Cutter Cat #	Plate Cutter List Price	# of Inserts
1/2"	07253	\$272	4	59195	\$297	4
5/8"	07256	282	6	49514	300	4
3/4"	07257	290	6	49515	301	4
7/8"	07259	297	8	52040	316	6
1"	07236	306	8	07260	336	6
1-1/8"	07237	321	10	07262	353	6
1-1/4"	07238	336	10	07263	397	6
1-3/8"	07239	377	12	61081	406	8
1-1/2"	07240	414	12	07265	497	8
1-5/8"	58064	431	14	62663	534	8
1-3/4"	07241	435	14	07266	556	8
1-7/8"	07242	454	16	55705	560	10
2"	07243	473	16	07267	562	10
2-1/2"	07248	486	20	07269	638	12
3"	07249	653	26	07270	767	14
3-1/2"	07250	701	30	62429	852	16
4"	07252	764	34	07273	891	20
5"	07254	1,082	42	43399	1,349	25
6"	07255	1,281	50	07275	1,844	30
8"	53358	1,392	70	07276	1,922	40
9"	66108	1,471	76	43401	2,018	45
10"	45009	1,601	84	43402	2,141	50



Cat # 01673

## Retractable Carbide Bits

Used in Offices and buildings where duct work is present

Carbide bit drills through thin ductwork and diamond bit drills through concrete



Cat # 01930

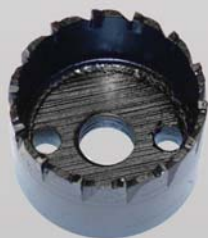
Cat # 01928



Cat # 05252

Retractable Carbide Bits			
Description	Cat #	List Price	
2-1/4" x 2-1/2" Retractable carbide Diamond Bit (complete)	01673	\$764	
2-1/4" Carbide Hole Saw	00032	309	
2-1/2" x 8" HOL Threaded Bit*	05252	424	
Threaded Bit Adapter	01929	222	
2-1/2" Left/Right Threaded Cap	01928	62	
2-3/4" Left/Right Threaded Cap	01930	63	

\*Specify threads for retractable carbide bit when ordering.



Cat # 00032



Cat # 01929



Water is Required  
for Cooling



# SPECIALTY CORE BITS

Custom Bits for Various Applications

## The #1 Source for Custom Core Bits

### Step Bits

Designed to make a recessed 'step' for drain covers, and other special uses.

*Custom sizes available.*

Available in all quality grades and in straight segment or turbo style.

**Other Sizes and Specifications Available \*Star Blue and Utility Green excluded**

These bits are custom made to your individual application. Examples shown below.

*Call customer service to order yours today!*



SPECIALTY CORE BITS

HEAVY DUTY ORANGE					
HOL-General Purpose, Longer Life					
Size/Description	Part #	Cat #	Specification	List Price	
2" X 3" X 4" X 6" CORE	BH200030004000	01079	HOL	\$1,084	
2" X 4"	BH20004000	23045	HOL	946	
2" X 4" X 6"	BH200040006000	08724	HOL	1,769	
2" X 4" X 6-1/2"	BH200040006500	27384	HOL	1,769	
2-1/4" X 2-1/2" X 8-1/4" CORE	BH22502500	04961	HOL	558	
2-9/32" X 2-9/16"	BH22812562	52075	HOL	657	
3" X 3 1/2" CORE	BH30003500	78611	HOL	768	
5" X 3" X 1"	BH531STP	50768	HOL	1,298	
PREMIUM BLACK					
POL-General Purpose, Longest Life					
Size/Description	Part #	Cat #	Specification	List Price	
1" X 3" X 5" X 24" DRILL DEPTH	BP100030005000	26784	POL	\$1,907	
1 3/4" X 2"	BP17502000	25738	POL	558	
2" X 3 1/2"	BP20003500	76194	POL	747	
2" X 5"	BP20005000	97639	POL	1,009	
2-1/4" X 2-1/2"	BP22502500	05572	POL	711	
6.850" X 6-1/8"	BP68506125	29113	POL	2,816	
1 1/4" X 3/4"	BP7501250	18535	POL	385	

# PANCAKE BITS

## Custom Core Bits for Specialized Applications



Water is Required  
for Cooling



### 'Pancake' Bits

For use in applications where a hole is needed with a recessed top. Great for airport runway light canisters. Most custom sizes and bonds available.

These bits are custom made to your individual application.

Examples shown below.

#### Other Sizes and Specifications Available

*Call customer service to order yours today!*

SPECIALTY CORE BITS

### HEAVY DUTY ORANGE HOL-General Purpose, Longer Life

Size/Description	Part #	Cat #	Specification	List Price
2.880" X 4.620"	BH28804620	84474	HOL	\$961
3.000" X 4.500"	BH30004500	99174	HOL	1,232
3-1/2" X 3"	BH35003000	13780	HOL	413
3.541" X 1.500" PILOT	BH35411500	51323	HOL	806
3.840" X 1/2" CARBIDE PILOT	BH384012	61773	HOL	778
3.840" X 1.500" PILOT	BH38401500	53314	HOL	904
4" X 2" WITH 2" CENTER PILOT 3" LONG	BH40002000P	01093	HOL	946
4.120" X 4.750"	BH41204750	84475	HOL	1,093
4.515" X 2.980" X 3/8" CARBIDE PILOT	BH451538	66964	HOL	2,251
4.700" X 4.090" X 3/8" CARBIDE PILOT	BH470038	66967	HOL	2,588
5" X 3"	BH50003000P	16889	HOL	1,210
5 1/2" WITH 1 1/4"-7 HUB	BH5500P	04467	HOL	759
6 1/2" X 4 3/4" HEAVY DUTY	BH65004750	20352	HOL	1,647
7" X 6-1/2"	BH70006500P	71695	HOL	2,097

### PREMIUM BLACK POL-General Purpose, Longest Life

Size/Description	Part #	Cat #	Specification	List Price
1-3/4" X 1-1/8"	BP17501125	04358	POL	\$447
2-1/2" PANCAKE X 2" PILOT	BP25002000	23843	POL	727
2 1/2" PANCAKE X 7/8" PILOT	BP250078	96775	POL	490
1-3/4" X 2-7/8"	BP28751750	04356	POL	644
3-1/8" X 7/8" PILOT	BP312578	88235	POL	610
4-1/2" X 2-3/4" WITH PILOT	BP45002750P	25612	POL	1,078
5" X 3-1/2"	BP50003500	99106	POL	1,081

# CORE BIT OPTIONS

## Expansion Adapters for Open End Bits & Pricing for Extra Core Length

Expansion Adapters - For Use with Open-Ended Bits			
SIZE	Part #	Cat #	List Price
1"	4010476	01638	\$71
1-1/8"	4010477	01639	75
1-1/4"	4010478	54239	76
1-3/8"	4010479	01640	80
1-1/2"	4010480	01641	88
1-5/8"	4010481	01642	89
1-3/4"	4010482	01643	90
1-7/8"	4010483	71254	91
2"	4010484	01644	92
2-1/4"	4010485	01645	105
2-1/2"	4010486	01646	114
2-3/4"	4010487	01647	128
3"	4010488	01648	139
3-1/4"	4010489	01649	150
3-1/2"	4010490	01651	163
4"	4010491	01652	185
4-1/4"	4010492	01654	203
4-1/2"	4010493	01655	214
5"	4010494	01656	233
5-1/2"	4010495	01658	255
6"	4010496	01659	277
6-1/4"	4010497	01660	323
6-1/2"	4010498	01661	353
7"	4010499	01662	383
8"	4010500	01663	419
9"	4010501	01664	427
10"	4010502	01665	523

Add to List Price for Extra Core Length	
SIZE	Per Extra Inch of Core Length
1/2"	\$1
5/8"	1
3/4"	1
7/8"	1
1"	2
1-1/8"	2
1-1/4"	2
1-3/8"	2
1-1/2"	2
1-5/8"	2
1-3/4"	2
1-7/8"	2
2"	4
2-1/4"	4
2-3/8"	4
2-1/2"	4
2-3/4"	4
3"	5
3-1/4"	5
3-1/2"	5
4"	6
4-1/4"	6
4-1/2"	6
5"	8
5-1/2"	8
6"	9
6-1/4"	9
6-1/2"	9
7"	10
8"	12
9"	13
10"	15
12"	20
14"	23
16"	27
18"	30
20"	34
24"	38

CORE BIT OPTIONS



Expansion adapters are used instead of welded hubs on open-end core bits. These adapters are made up of two threaded plates with expansion ring. These three pieces are placed in the core barrel and tightened on the drill rig spindle. The expansion ring expands, and tightens against the core barrel - keeping the bit secure.

# CORE BIT SEGMENTS ONLY .145" through .187" Thickness

## Heavy Duty Orange Segments Only Specification: HOL

<b>.145" Thickness</b>			
Bit Size	Part #	Cat #	List Price
1"	BSGH14501	30043	\$23.41
1-1/4"	BSGH145125	30047	23.41
1-1/2"	BSGH14515	30081	23.41
2"	BSGH14502	25040	23.41
2-1/2"	BSGH14525	25041	23.41
3"	BSGH14503	25044	23.41
4"	BSGH14504	25062	23.41
5"	BSGH14505	25076	23.41
6"	BSGH14506	23257	23.41
8"	BSGH14508	30082	23.41
9" +	BSGH14512	30088	23.41
<b>.165" Thickness</b>			
Bit Size	Part #	Cat #	List Price
1"	BSGH16501	25318	\$27.48
1-1/4"	BSGH165125	30105	27.48
1-1/2"	BSGH16515	30164	27.48
2"	BSGH16502	25321	27.48
2-1/2"	BSGH16525	30209	27.48
3"	BSGH16503	25323	27.48
4"	BSGH16504	22796	27.48
5"	BSGH16505	25332	27.48
6"	BSGH16506	25334	27.48
8"	BSGH16508	25335	27.48
9" +	BSGH16512	25336	27.48
<b>.187" Thickness</b>			
Bit Size	Part #	Cat #	List Price
1"	BSGH18701	30897	\$30.55
1-1/4"	BSGH187125	30903	30.55
1-1/2"	BSGH18715	30905	30.55
2"	BSGH18702	25341	30.55
2-1/2"	BSGH18725	25367	30.55
3"	BSGH18703	25369	30.55
4"	BSGH18704	25378	30.55
5"	BSGH18705	25386	30.55
6"	BSGH18706	25390	30.55
8"	BSGH18708	23582	30.55
9" +	BSGH18712	20612	30.55

## Premium Black Segments Only Specification: POL

<b>.145" Thickness</b>			
Bit Size	Part #	Cat #	List Price
1"	BSGP14501	30309	\$30.29
1-1/4"	BSGP145125	30316	30.29
1-1/2"	BSGP14515	30317	30.29
2"	BSGP14502	25562	30.29
2-1/2"	BSGP14525	25579	30.29
3"	BSGP14503	22013	30.29
4"	BSGP14504	25581	30.29
5"	BSGP14505	22030	30.29
6"	BSGP14506	26141	30.29
8"	BSGP14508	30303	30.29
9" +	BSGP14512	30305	30.29
<b>.165" Thickness</b>			
Bit Size	Part #	Cat #	List Price
1"	BSGP16501	25586	\$35.47
1-1/4"	BSGP165125	30962	35.47
1-1/2"	BSGP16515	25591	35.47
2"	BSGP16502	25595	35.47
2-1/2"	BSGP16525	25597	35.47
3"	BSGP16503	23003	35.47
4"	BSGP16504	23812	35.47
5"	BSGP16505	25599	35.47
6"	BSGP16506	25605	35.47
8"	BSGP16508	15289	35.47
9" +	BSGP16512	25614	35.47
<b>.187" Thickness</b>			
Bit Size	Part #	Cat #	List Price
1"	BSGP18701	30342	\$39.46
1-1/4"	BSGP187125	30364	39.46
1-1/2"	BSGP18715	25634	39.46
2"	BSGP18702	25637	39.46
2-1/2"	BSGP18725	30306	39.46
3"	BSGP18703	25730	39.46
4"	BSGP18704	25974	39.46
5"	BSGP18705	25979	39.46
6"	BSGP18706	17281	39.46
8"	BSGP18708	23804	39.46
9" +	BSGP18712	15318	39.46

## Pro Blue Segments Only Specification: TOL

<b>.145" Thickness</b>			
Bit Size	Part #	Cat #	List Price
1"	BSGT14501	30968	\$30.99
1-1/4"	BSGT145125	30998	30.99
1-1/2"	BSGT14515	31007	30.99
2"	BSGT14502	26864	30.99
2-1/2"	BSGT14525	26894	30.99
3"	BSGT14503	26906	30.99
4"	BSGT14504	26909	30.99
5"	BSGT14505	26913	30.99
6"	BSGT14506	26923	30.99
8"	BSGT14508	30969	30.99
9" +	BSGT14512	30979	30.99
<b>.165" Thickness</b>			
Bit Size	Part #	Cat #	List Price
1"	BSGT16501	31022	34.79
1-1/4"	BSGT165125	31040	34.79
1-1/2"	BSGT16515	31045	34.79
2"	BSGT16502	26925	34.79
2-1/2"	BSGT16525	26948	34.79
3"	BSGT16503	26954	34.79
4"	BSGT16504	26955	34.79
5"	BSGT16505	26960	34.79
6"	BSGT16506	26967	34.79
8"	BSGT16508	27246	34.79
9" +	BSGT16512	30460	34.79
<b>.187" Thickness</b>			
Bit Size	Part #	Cat #	List Price
1"	BSGT18701	31109	\$38.95
1-1/4"	BSGT187125	31112	38.95
1-1/2"	BSGT18715	31124	38.95
2"	BSGT18702	26969	38.95
2-1/2"	BSGT18725	26971	38.95
3"	BSGT18703	26978	38.95
4"	BSGT18704	26979	38.95
5"	BSGT18705	27014	38.95
6"	BSGT18706	27017	38.95
8"	BSGT18708	27018	38.95
9" +	BSGT18712	27020	38.95

### Bit Crowns - 1/2" through 1"

Diameter	HD Orange HOL Cat #	HD Orange List Price	Premium Black POL Cat #	Premium Black List Price	Supreme Silver UOF Cat #	Supreme Silver List Price
1/2"	28555	\$72.03	28566	\$109.17	06357	\$130.54
5/8"	28556	73.15	21790	111.42	06359	136.17
3/4"	28557	77.65	20261	114.79	06361	140.68
7/8"	28558	91.16	18340	128.30	06362	158.68
1"	28559	119.28	06309	140.68	06346	167.68



Bit Crowns are continuous and have water ways to allow water and slurry to escape.

CORE BITS SEGMENTS

# CORE BIT SEGMENTS ONLY .145" through .187" Thickness

## Supreme Silver Segments Only

Specification: UOL



Loose segments include silver braze.

**Extra braze available**

**Cat # 00166**

**List Price \$1.00**

### Standard Segment Sizes

Bit Diameter	Segment Widths
1-7/8" thru 6"	.145"
7" and 8"	.165"
9" thru 16"	.187"
18" thru 24"	.220"
Above 24"	.250"

### .145" Thickness

Bit Size	Part #	Cat #	List Price
1"	BSGU14501	31174	\$35.58
1-1/4"	BSGU145125	31181	35.58
1-1/2"	BSGU14515	27773	35.58
2"	BSGU14502	27796	35.58
2-1/2"	BSGU14525	27834	35.58
3"	BSGU14503	27851	35.58
4"	BSGU14504	27852	35.58
5"	BSGU14505	27855	35.58
6"	BSGU14506	27856	35.58
8"	BSGU14508	31184	35.58
9" +	BSGU14512	31196	35.58

### .165" Thickness

Bit Size	Part #	Cat #	List Price
1"	BSGU16501	31610	\$39.94
1-1/4"	BSGU165125	31626	39.94
1-1/2"	BSGU16515	31627	39.94
2"	BSGU16502	27882	39.94
2-1/2"	BSGU16525	27894	39.94
3"	BSGU16503	27899	39.94
4"	BSGU16504	27902	39.94
5"	BSGU16505	27905	39.94
6"	BSGU16506	27911	39.94
8"	BSGU16508	27923	39.94
9" +	BSGU16512	30476	39.94

### .187" Thickness

Bit Size	Part #	Cat #	List Price
1"	BSGU18701	31574	\$44.82
1-1/4"	BSGU187125	31575	44.82
1-1/2"	BSGU18715	31578	44.82
2"	BSGU18702	27938	44.82
2-1/2"	BSGU18725	27942	44.82
3"	BSGU18703	27955	44.82
4"	BSGU18704	27958	44.82
5"	BSGU18705	27967	44.82
6"	BSGU18706	27978	44.82
8"	BSGU18708	27993	44.82
9" +	BSGU18712	28231	44.82

## Super Premium Red Plus

Turbo Segments Only

Specification: TSPSAG3+

### .145" Thickness

Bit Size	Part #	Cat #	List Price
1"	BSGTSP+14501	30478	\$29.68
1-1/4"	BSGTSP+145125	30480	29.68
1-1/2"	BSGTSP+14515	30485	29.68
2"	BSGTSP+14502	17126	29.68
2-1/2"	BSGTSP+14525	28433	29.68
3"	BSGTSP+14503	19853	29.68
4"	BSGTSP+14504	15872	29.68
5"	BSGTSP+14505	28449	29.68
6"	BSGTSP+14506	28451	29.68
8"	BSGTSP+14508	30487	29.68
9" +	BSGTSP+14512	30500	29.68

### .165" Thickness

Bit Size	Part #	Cat #	List Price
1"	BSGTSP+16501	31681	\$32.40
1-1/4"	BSGTSP+165125	31691	32.40
1-1/2"	BSGTSP+16515	31701	32.40
2"	BSGTSP+16502	28453	32.40
2-1/2"	BSGTSP+16525	19389	32.40
3"	BSGTSP+16503	18872	32.40
4"	BSGTSP+16504	15965	32.40
5"	BSGTSP+16505	18910	32.40
6"	BSGTSP+16506	14797	32.40
8"	BSGTSP+16508	14836	32.40
9" +	BSGTSP+16512	28475	32.40

### .187" Thickness

Bit Size	Part #	Cat #	List Price
1"	BSGTSP+18701	31718	\$36.26
1-1/4"	BSGTSP+187125	31727	36.26
1-1/2"	BSGTSP+18715	31730	36.26
2"	BSGTSP+18702	28487	36.26
2-1/2"	BSGTSP+18725	28492	36.26
3"	BSGTSP+18703	28507	36.26
4"	BSGTSP+18704	09681	36.26
5"	BSGTSP+18705	18636	36.26
6"	BSGTSP+18706	28737	36.26
8"	BSGTSP+18708	08511	36.26
9" +	BSGTSP+18712	14844	36.26

### Bit Crowns - 1-1/8" through 1-3/4"

Diameter	HD Orange HOL Cat #	HD Orange List Price	Premium Black POL Cat #	Premium Black List Price	Supreme Silver UOF Cat #	Supreme Silver List Price
1-1/8"	28560	\$132.80	06312	\$154.18	06348	\$183.44
1-1/4"	28561	136.17	06315	160.94	06349	191.31
1-3/8"	28562	144.06	06319	171.06	06350	208.19
1-1/2"	28563	151.93	06325	180.06	06351	219.45
1-5/8"	28564	159.81	18889	187.94	06352	229.58
1-3/4"	51159	172.19	06332	201.45	06355	256.59



Bit Crowns are continuous and have water ways to allow water and slurry to escape.

CORE BITS SEGMENTS

# CORE BIT SEGMENTS ONLY

.200" through .250" Thickness

## Heavy Duty Orange Segments Only Specification: HOL

## Premium Black Segments Only Specification: POL

## Pro Blue Segments Only Specification: TOL

CORE BITS SEGMENTS

<b>.200" Thickness</b>			
Bit Size	Part #	Cat #	List Price
1"	BSGH20001	30908	\$32.38
1-1/4"	BSGH200125	30913	32.38
1-1/2"	BSGH20015	30909	32.38
2"	BSGH20002	25395	32.38
2-1/2"	BSGH20025	25398	32.38
3"	BSGH20003	25399	32.38
4"	BSGH20004	25401	32.38
5"	BSGH20005	25402	32.38
6"	BSGH20006	25403	32.38
8"	BSGH20008	25425	32.38
9" +	BSGH20012	25430	32.38
<b>.220" Thickness</b>			
Bit Size	Part #	Cat #	List Price
1"	BSGH22001	30914	\$35.20
1-1/4"	BSGH220125	30915	35.20
1-1/2"	BSGH22015	30920	35.20
2"	BSGH22002	25433	35.20
2-1/2"	BSGH22025	25434	35.20
3"	BSGH22003	25449	35.20
4"	BSGH22004	25472	35.20
5"	BSGH22005	25455	35.20
6"	BSGH22006	25475	35.20
8"	BSGH22008	25486	35.20
9" +	BSGH22012	23596	35.20
<b>.250" Thickness</b>			
Bit Size	Part #	Cat #	List Price
1"	BSGH25001	30928	\$39.36
1-1/4"	BSGH250125	30942	39.36
1-1/2"	BSGH25015	30947	39.36
2"	BSGH25002	30257	39.36
2-1/2"	BSGH25025	30268	39.36
3"	BSGH25003	30271	39.36
4"	BSGH25004	30287	39.36
5"	BSGH25005	30299	39.36
6"	BSGH25006	25499	39.36
8"	BSGH25008	25502	39.36
9" +	BSGH25012	23106	39.36

<b>.200" Thickness</b>			
Bit Size	Part #	Cat #	List Price
1"	BSGP20001	30366	\$41.88
1-1/4"	BSGP200125	30390	41.88
1-1/2"	BSGP20015	30395	41.88
2"	BSGP20002	25985	41.88
2-1/2"	BSGP20025	25994	41.88
3"	BSGP20003	26010	41.88
4"	BSGP20004	26011	41.88
5"	BSGP20005	26012	41.88
6"	BSGP20006	26013	41.88
8"	BSGP20008	26014	41.88
9" +	BSGP20012	26015	41.88
<b>.220" Thickness</b>			
Bit Size	Part #	Cat #	List Price
1"	BSGP22001	30396	\$45.55
1-1/4"	BSGP220125	30405	45.55
1-1/2"	BSGP22015	30434	45.55
2"	BSGP22002	26016	45.55
2-1/2"	BSGP22025	26021	45.55
3"	BSGP22003	26022	45.55
4"	BSGP22004	26024	45.55
5"	BSGP22005	26025	45.55
6"	BSGP22006	26028	45.55
8"	BSGP22008	26045	45.55
9" +	BSGP22012	21049	45.55
<b>.250" Thickness</b>			
Bit Size	Part #	Cat #	List Price
1"	BSGP25001	30455	\$50.97
1-1/4"	BSGP250125	30456	50.97
1-1/2"	BSGP25015	26053	50.97
2"	BSGP25002	26054	50.97
2-1/2"	BSGP25025	26075	50.97
3"	BSGP25003	26081	50.97
4"	BSGP25004	26082	50.97
5"	BSGP25005	26086	50.97
6"	BSGP25006	26095	50.97
8"	BSGP25008	26104	50.97
9" +	BSGP25012	21401	50.97

<b>.200" Thickness</b>			
Bit Size	Part #	Cat #	List Price
1"	BSGT20001	31135	\$42.93
1-1/4"	BSGT200125	31138	42.93
1-1/2"	BSGT20015	31142	42.93
2"	BSGT20002	27041	42.93
2-1/2"	BSGT20025	27055	42.93
3"	BSGT20003	27066	42.93
4"	BSGT20004	27075	42.93
5"	BSGT20005	27080	42.93
6"	BSGT20006	27099	42.93
8"	BSGT20008	27100	42.93
9" +	BSGT20012	27113	42.93
<b>.220" Thickness</b>			
Bit Size	Part #	Cat #	List Price
1"	BSGT22001	31156	\$46.70
1-1/4"	BSGT220125	31159	46.70
1-1/2"	BSGT22015	31161	46.70
2"	BSGT22002	27134	46.70
2-1/2"	BSGT22025	27146	46.70
3"	BSGT22003	27151	46.70
4"	BSGT22004	27154	46.70
5"	BSGT22005	27163	46.70
6"	BSGT22006	27165	46.70
8"	BSGT22008	27166	46.70
9" +	BSGT22012	27167	46.70
<b>.250" Thickness</b>			
Bit Size	Part #	Cat #	List Price
1"	BSGT25001	31163	\$52.38
1-1/4"	BSGT250125	31168	52.38
1-1/2"	BSGT25015	31173	52.38
2"	BSGT25002	27168	52.38
2-1/2"	BSGT25025	27169	52.38
3"	BSGT25003	27170	52.38
4"	BSGT25004	27172	52.38
5"	BSGT25005	27184	52.38
6"	BSGT25006	27224	52.38
8"	BSGT25008	27236	52.38
9" +	BSGT25012	27244	52.38



Loose segments include silver braze.

**Extra braze available**

**Cat # 00166**

**List Price \$1.00**

# CORE BIT SEGMENTS ONLY

.200" through .250" Thickness

## Supreme Silver Segments Only Specification: UOL

<b>.200" Thickness</b>			
Bit Size	Part #	Cat #	List Price
1"	BSGU20001	31586	\$49.18
1-1/4"	BSGU200125	31595	49.18
1-1/2"	BSGU20015	31604	49.18
2"	BSGU20002	27995	49.18
2-1/2"	BSGU20025	28001	49.18
3"	BSGU20003	28008	49.18
4"	BSGU20004	28012	49.18
5"	BSGU20005	28018	49.18
6"	BSGU20006	28031	49.18
8"	BSGU20008	28084	49.18
9" +	BSGU20012	28090	49.18
<b>.220" Thickness</b>			
Bit Size	Part #	Cat #	List Price
1"	BSGU22001	31633	\$53.57
1-1/4"	BSGU220125	31640	53.57
1-1/2"	BSGU22015	31642	53.57
2"	BSGU22002	28283	53.57
2-1/2"	BSGU22025	28293	53.57
3"	BSGU22003	28092	53.57
4"	BSGU22004	28118	53.57
5"	BSGU22005	28134	53.57
6"	BSGU22006	28144	53.57
8"	BSGU22008	28150	53.57
9" +	BSGU22012	28165	53.57
<b>.250" Thickness</b>			
Bit Size	Part #	Cat #	List Price
1"	BSGU25001	31658	\$59.67
1-1/4"	BSGU250125	31677	59.67
1-1/2"	BSGU25015	31678	59.67
2"	BSGU25002	28167	59.67
2-1/2"	BSGU25025	28180	59.67
3"	BSGU25003	28191	59.67
4"	BSGU25004	28197	59.67
5"	BSGU25005	28202	59.67
6"	BSGU25006	28205	59.67
8"	BSGU25008	28212	59.67
9" +	BSGU25012	28213	59.67

## Super Premium Red Plus Turbo Segments Only Specification: TSPSAG3+

<b>.200" Thickness</b>			
Bit Size	Part #	Cat #	List Price
1"	BSGTSP+20001	31745	\$39.94
1-1/4"	BSGTSP+200125	31748	39.94
1-1/2"	BSGTSP+20015	31754	39.94
2"	BSGTSP+20002	28509	39.94
2-1/2"	BSGTSP+20025	28539	39.94
3"	BSGTSP+20003	28589	39.94
4"	BSGTSP+20004	28592	39.94
5"	BSGTSP+20005	23837	39.94
6"	BSGTSP+20006	28615	39.94
8"	BSGTSP+20008	08543	39.94
9" +	BSGTSP+20012	13568	39.94
<b>.220" Thickness</b>			
Bit Size	Part #	Cat #	List Price
1"	BSGTSP+22001	31803	\$43.41
1-1/4"	BSGTSP+220125	31805	43.41
1-1/2"	BSGTSP+22015	31809	43.41
2"	BSGTSP+22002	28629	43.41
2-1/2"	BSGTSP+22025	28630	43.41
3"	BSGTSP+22003	28651	43.41
4"	BSGTSP+22004	28656	43.41
5"	BSGTSP+22005	28665	43.41
6"	BSGTSP+22006	28676	43.41
8"	BSGTSP+22008	21810	43.41
9" +	BSGTSP+22012	08572	43.41
<b>.250" Thickness</b>			
Bit Size	Part #	Cat #	List Price
1"	BSGTSP+25001	31810	\$48.69
1-1/4"	BSGTSP+250125	31811	48.69
1-1/2"	BSGTSP+25015	31879	48.69
2"	BSGTSP+25002	28689	48.69
2-1/2"	BSGTSP+25025	28704	48.69
3"	BSGTSP+25003	28707	48.69
4"	BSGTSP+25004	28718	48.69
5"	BSGTSP+25005	28720	48.69
6"	BSGTSP+25006	17594	48.69
8"	BSGTSP+25008	28729	48.69
9" +	BSGTSP+25012	08589	48.69

CORE BITS SEGMENTS

### Standard Segment Sizes

Bit Diameter	Segment Widths
1-7/8" thru 6"	.145"
7" and 8"	.165"
9" thru 16"	.187"
18" thru 24"	.220"
Above 24"	.250"

Loose segments include silver braze.

**Extra braze available**  
Cat # 00166  
List Price \$1.00



# CORE BIT INFORMATION

## Number of Segments on Wet Core Bits

Segment Size	Core Bit Diameter	Standard Gold	Heavy Duty Orange	Premium Black	Pro Blue	Super Premium Red	Turbo
Uses segs for 1" bit	1		4	4	4		
Uses segs for 1-1/4" bit	1 1/4		5	5	5		
	1 3/8		5	5			
Uses segs for 1-1/2" bit	1 1/2		4	4	4		
	1 5/8		5	5			
	1 3/4		5	5	5		
Uses segs for 2" bit	1 7/8		4	4			
	2	5	5	5	4	5	4
Uses segs for 2-1/4" bit	2 1/4	5	5	5	5	5	5
	2 1/2	6	6	6	5	6	5
Uses segs for 3" bit	2 3/4	6	6	6	6	6	6
	3	7	7	7	6	7	6
	3 1/4	8	8	8	8	8	6
	3 1/2	8	8	8	7	8	7
Uses segs for 4" bit	3 3/4						
	4	10	10	10	8	10	8
Use segs for 5" bit	4 1/4	10	10	10	8	10	8
	4 1/2	11	11	11	9	11	9
Uses segs for 6" bit	5	12	12	12	10	12	10
	5 1/2	13	13	13	11	13	11
	6	14	14	14	12	14	12
	6 1/4	14	14	14	12	14	12
Uses segs for 8" bit	6 1/2	15	15	15	13	15	13
	7	14	16	16	14		16
Uses segs for 12" bit	8	16	16	16	16		18
	9	18	18	18	18		
	10	20	20	20	20		20
	12	24	24	24	24		24
	14	28	28	28	28		
	16	30	30	30	30		
	18		30	30	30		
	20		32	32			
	24		38	38			
	26		40	40			
	28		44	44			
	30		47	47			
32		49	49				
34		52	52				
36		56	56				
38		60	60				
40		62	62				
42		65	65				
44		68	68				
46		71	71				
48		74	74				

# CORE BIT OPTIONS - RESEGMENTING

We Will Re-Tip Your Worn Bit at a 20% Savings to You



## Resegmented Core Bits

Save money by recycling your used core bits. The bigger the bit, the more you save.

Send us your used core bits, ours or a competitors, and we will cut off the end and put new segments on it for a bit as good as new.

Core bits can be resegmented with most quality grades and bonds provided the tube is suitable.

### Costs to Resegment Your Used Core Bits

SIZE	Standard Gold	Heavy Duty Orange	Premium Black	Supreme Silver	Super Premium Red	Pro Blue	HD Orange Turbo	Premium Black Turbo	Super Premium Red Turbo
3/4"				\$146					
7/8"		\$118	\$134	149					
1"		123	136	153	\$144	\$150			
1-1/8"		130	149	186					
1-1/4"		151	175	207	187	200			
1-3/8"		154	178	211					
1-1/2"		158	181	226	194	207			
1-5/8"		168	211	263					
1-3/4"		175	217	267	235	242			
1-7/8"			224	274					
2"	\$185	202	230	293	249	260	\$181	\$220	\$249
2-1/4"	197	216	247	309				230	
2-1/2"	218	242	257	351	275	299	221	246	275
2-3/4"	237	258	294	369					
3"	238	285	330	412	355	366	248	294	355
3-1/4"	274	327	358						
3-1/2"	276	330	366		383	415	309	323	383
4"	317	381	453		437	463	341	358	437
4-1/4"	349	410	484					424	
4-1/2"	393	469	526		562	573	368	429	562
5"	423	498	576		623	678	395	455	623
5-1/2"	497	579	667					474	
6"	513	601	694		742	759	486	502	742
6-1/4"	580	671	746						
6-1/2"	698	833	886						
7"	752	844	936		991	1,050		691	991
8"	804	875	965		1,077	1,199	769	850	1,077
9"	978	1,058	1,174		1,282	1,401		974	1,282
10"	1,054	1,067	1,216		1,390	1,439	948	1,088	1,390
12"	1,182	1,232	1,359				1,095	1,197	
14"	1,511	1,522	1,678					1,466	
16"		1,739	1,858					2,026	
18"		1,978	2,176						
20"		2,158	2,396						
24"		2,790	2,997						

Resegmenting not available for Star Blue Core Bits

\*Call Customer Service for Additional Services

# CORE BIT INFORMATION

## Core Bit RPM Charts

**Segmented Core Bit Recommended R.P.M. Reference Chart**

Bit Diameter	Minimum RPM	Maximum RPM	Ideal RPM
5/16"	7639	12736	10182
1/2"	4775	7960	6364
5/8"	3820	6368	5091
3/4"	3183	5307	4242
7/8"	2728	4549	3636
1"	2387	3980	3182
1-1/5"	1989	3317	2652
1-1/8"	2122	3538	2828
1-1/4"	1910	3184	2545
1-3/8"	1736	2895	2314
1-1/2"	1592	2653	2121
1-5/8"	1469	2449	1958
1-3/4"	1364	2274	1818
1-7/8"	1273	2123	1697
2"	1194	1990	1591
2-1/4"	1061	1769	1414
2-3/8"	1005	1676	1340
2-1/2"	955	1592	1273
2-3/4"	868	1447	1157
3"	796	1327	1061
3-1/4"	735	1225	979
3-1/2"	682	1137	909
4"	597	995	795
4-1/4"	562	937	749
4-1/2"	531	884	707
5"	477	796	636
5-1/2"	434	724	579
6"	398	663	530
6-1/4"	382	637	509
6-1/2"	367	612	490
7"	341	569	455
8"	298	498	398
9"	265	442	354
10"	239	398	318
12"	199	332	265
14"	171	284	227
16"	149	249	199
18"	133	221	177
20"	119	199	159
22"	109	181	145
24"	99	166	133
26"	92	153	122
28"	85	142	114
30"	80	133	106
32"	75	124	99
34"	70	117	94
36"	66	111	88
38"	63	105	84
40"	60	100	80
42"	57	95	76
44"	54	90	72
46"	52	87	69
48"	50	83	66

**Carbide/Plate Cutter Core Bit Recommended R.P.M. Reference Chart**

Bit Diameter	Minimum RPM	Maximum RPM	Ideal RPM
1/2"	458	900	611
5/8"	367	900	489
3/4"	306	900	407
7/8"	262	900	349
1"	229	350	306
1-1/8"	204	350	272
1-1/4"	183	350	244
1-3/8"	167	350	222
1-1/2"	153	350	204
1-5/8"	141	350	188
1-3/4"	131	350	175
1-7/8"	122	350	163
2"	115	350	153
2-1/2"	92	350	122
3"	76	350	102
3-1/2"	65	350	87
4"	57	350	76
5"	46	350	61
6"	38	350	51

**Dry Hole Saw and Dry Vacuum Core Bit Recommended R.P.M. Reference Chart**

Bit Diameter	Minimum RPM	Maximum RPM	Ideal RPM
7/8"	2300	6000	5457
1"	2300	6000	4775
1-1/4"	2300	6000	3820
1-1/2"	1600	5000	3183
1-3/4"	1600	5000	2728
2"	1200	5000	2387
2-1/4"	1200	5000	2122
2-1/2"	1200	5000	1910
3"	800	5000	1592
3-1/2"	800	5000	1364
4"	700	5000	1241
4-1/2"	700	5000	1103
5"	700	3500	993
6"	600	2500	828