



Plate Compactors



One-way and reversible models



One-Way Plate Compactors

MultiQuip's Mikasa Brand Plate Compactors are recognized as the industry standard for compacting granular soils and asphalt.

Thousands of satisfied users know that MultiQuip has it all—top performance, easy handling, low maintenance and long life.

Our best-selling plate now features an advanced anti-vibration handle design that reduces vibration to the operator by up to 50% compared to other plate compactors.

MVC88

Easy to use, easy to transport, the MVC-88 is the newest and most technically advanced compactor on the market.

Protective engine guard

Sealed belt cover keeps dirt and rocks out of the belt

Convenient oil drain for engine oil

Cog-tooth belt drive for longer life

Self-cleaning plate design minimizes dirt and rock build-up

Engine oil shutdown

Four lifting handles — plate can be lifted from the sides

Powered by a 4.8-HP Honda GX-160 or a 5.7-HP Robin EX-17 gasoline engine*



MVC88

3,372 lbs. centrifugal force



WHL88

Transport wheel kit



UPA88A

Urethane plate attachment for use on paving stones and brick pavers

13.7-qt. water tank

- Removable without tools
- Largest in its class
- Self-contained water shut-off valve

(Also available without water tank.)

There's a size and model for every application...

MVC64

- Perfect for small jobs or narrow areas
- Solid, high-strength steel base plate with curved edges provides top performance
- Extra-thick plate in back provides longer wear time
- Economical plate now features anti-vibration handle system
- Powered by Honda GX-120
- Optional water tank for asphalt use



MVC64
2,275 lbs.
centrifugal force

MVC82

- New model with anti-vibration flip-over handle
- Economical price tag
- Solid, high-strength steel base plate with curved edges for excellent performance and smooth turns on hot asphalt
- Four side-mounted grab handles for easy loading
- Powered by Robin or Honda engine
- Optional impact-resistant plastic water tank



MVC82
3,080 lbs. centrifugal force

MVC40G

- Tubular steel roll bar cage protects engine components and provides a lifting point
- Powered by Robin engine
- Heavy-duty steel base plate — closed design, ribbed for extra strength
- Only 11.4" wide — ideal for narrow trenches



MVC40G
1,573 lbs. centrifugal force

MVC90

MVC-90 incorporates more standard features than any other compactor in the industry.

- Tubular steel roll bar cage protects engine components and provides a lifting point
- Powered by Robin or Honda engines with oil alert and double V-belt drive
- Heavy-duty steel base plate — closed design, ribbed for extra strength
- Durable steel water-distribution system



MVC90
3,417 lbs. centrifugal force



Reversible Plate Compactors

MultiQuip's Mikasa Brand Reversible Plate Compactors are the ideal high-production machines for efficient compaction of sand, gravel and cohesive soils.

In addition to some of the standard vibratory plate features, reversible plates have two eccentric weights which increase the compaction force while creating a smooth transition between forward and reverse travel.

MVH206



Choice of Honda gasoline or Yanmar diesel engine

Simple, easy-to-use controls allow direction to be changed at full RPM with the flip of a lever

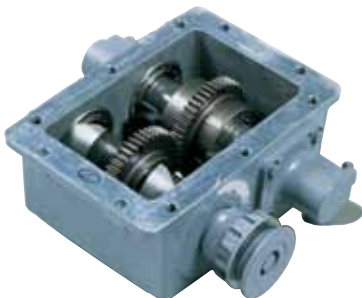
Oil-bath vibrator for low maintenance

Diagonal heavy-duty shock mounts protect engine and operator from excessive vertical and horizontal vibrations

Open base plate design allows rocks and dirt to slide off the plate for easier cleanup

High-strength steel base plate with curved edges for top performance

MVH206
7,868 lbs. centrifugal force



Heavy-duty vibrator bearings for long life



Combination tachometer and engine hour meter provides engine RPM and helps track service intervals and machine usage.

Ultra-simple hydraulic reversing process

MVH120

- Engine protection with top cover keeps dirt off engine
- Highly maneuverable—ideal for tight, confined areas
- Self-cleaning plate
- MVHR60 and 120 available with Honda engine
- MVH 200 available with Honda gasoline or Yanmar diesel engine
- Optimal water tank available for MVH-R60H, 8.8 qts. (8.5 liters)

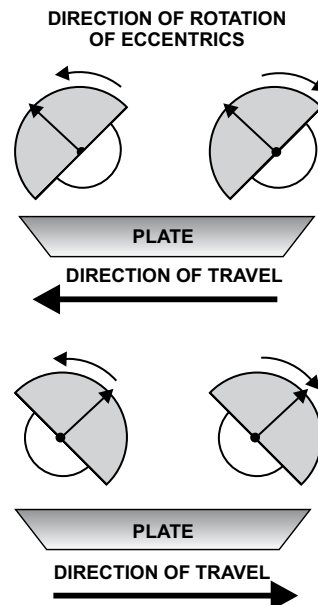
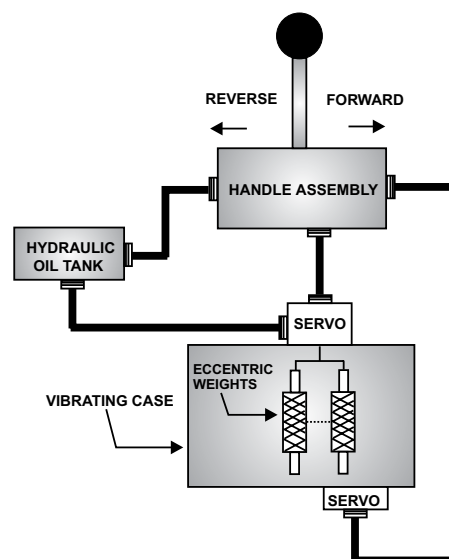
MVH120

5,058 lbs. centrifugal force



MVH Hydraulic System

- 1 As you start, pressure is generated with either a master cylinder (through model MVH200) or a rotary pump (MVH306 and larger).
- 2 Travel direction is determined by the relative position of the two eccentric weights to each other.
- 3 Forward and reverse direction is changed by means of switching the pressurized oil between servo pistons located on the eccentric case. The servo pistons change the position of the eccentric weights.
- 4 The hydraulic circuit is designed to return pressurized oil to the tank while the plate is in the neutral travel position. This allows for full compaction force while in neutral.





Reversible Plate Compactors

Multiquip's Brand Reversible Plate Compactors incorporate a unique hydraulic reversing mechanism, eliminating old-fashioned linkage adjustments.

There are no complicated mechanical drive shafts or cables to create problems, thus greatly reducing service time and expense.

MVH306

Available with Honda gasoline or Yanmar diesel engine

Roll cage protects engine and serves as lift bar

Handle folds to 90° position for ease of transportation and storage



Fan integrated with clutch pulley — cools air flow for longer belt life



Adjustable handle height for operator comfort reduces fatigue with the turn of a knob

Extension plates increase working area by 6" (included with MVH306, 406 and 502 series models)

Ribbed steel base plate provides extra strength

MVH306
10,116 lbs. centrifugal force



The high-performance heavyweights



MVH406

- 12,400 lbs. compaction force for high productivity
- Extension plates allow for additional utilization in different applications (standard equipment)
- Powered by a Honda 11-HP gasoline engine or Hatz/Subaru 9.7-HP diesel engine.
- Honda model is recoil start. Yanmar model is electric start with a recoil backup (battery not included).

MVH406

12,365 lbs. centrifugal force

Multiquip reversible plate compactors are perfect for difficult jobsite conditions — can be backed out of a trench while still compacting



MVH502

13,871 lbs. centrifugal force



Multiquip's MVH306 is ideal for asphalt stamping jobs.

MVH502

- 14,000 lbs. compaction force for high productivity
- Extension plates provide versatility for various applications (standard equipment)
- Powered by dependable Hatz 14.3-hp engine
- Electric start with hand-crank backup (battery not included)

Plate Compactor Specifications

Model	Plate Size WxL in. x in. (mm x mm)	Size With Extensions WxL in. x in. (mm x mm)	Centrifugal Force lbs. (kN)	Exciter Speed RPM	Max. Fwd. Speed ft./min. (m/min)	Engine Model	Fuel Type	HP Rating BHP (kw)*	Water Tank Capacity qt. (ltr)	Operating Weight lbs. (kg)
One-Way Plate Compactors										
MVC40G	11.4x16.5 (290x420)	N/A	1,618 (7.2)	6,200	82 (25)	Robin EH-09	Gas	2.4 (1.8)	N/A	118 (44)
MVC64VH	13.8x21.3 (350x540)	N/A	2,275 (10.1)	5,600	82 (25)	Honda GX-120	Gas	3.5 (2.6)	N/A	151 (68)
MVC64VHW	13.8x21.3 (350x540)	N/A	2,275 (10.1)	5,600	82 (25)	Honda GX-120	Gas	3.5 (2.6)	8.8 (8.3)	157 (71)
MVC82VH	17.7x22 (450x570)	N/A	3,080 (13.7)	5,600	72 (22)	Honda GX-160	Gas	4.8 (3.6)	N/A	181 (82)
MVC82VHW	17.7x22 (450x570)	N/A	3,080 (13.7)	5,600	72 (22)	Honda GX-160	Gas	4.8 (3.6)	11.5 (10.9)	181 (82)
MVC88VGH	19.7x20.7 (500x530)	N/A	3,420 (15)	6,000	72 (22)	Honda GX-160	Gas	4.8 (3.6)	N/A	212 (96)
MVC88VGHW	19.7x20.7 (500x530)	N/A	3,420 (15)	6,000	72 (22)	Honda GX-160	Gas	4.8 (3.6)	11.5 (10.9)	218 (99)
MVC90H	19.7x22 (500x560)	N/A	3,420 (15.2)	5,800	82 (25)	Honda GX-160	Gas	4.8 (3.6)	4 (3.8)	194 (88)
Reversible Plate Compactors										
MVH120VGH	15.8x23 (400x580)	N/A	5,058 (22.5)	6,000	75 (23)	Honda GX-160	Gas	4.8 (3.6)	N/A	256 (116)
MVH150VGH	16.9x27.6 (430x700)	N/A	6,070 (27)	5,400	82 (25)	Honda GX-200	Gas	5.5 (4.1)	N/A	331 (150)
MVH206GH	20x27.6 (510x700)	N/A	7,868 (35)	5,200	75 (23)	Honda GX-240	Gas	7.1 (5.3)	N/A	459 (208)
MVH206D	20x27.6 (510x700)	N/A	7,868 (35)	5,200	75 (23)	Yanmar L70EE**	Diesel	6.4 (4.8)	N/A	459 (208)
MVH306GH	18x34 (450x860)	24"x34 (610x860)	10,116 (45)	3,600	75 (23)	Honda GX-270	Gas	8.0 (6.0)	N/A	706 (320)
MVH306DS2	18x34 (450x860)	24"x34 (610x860)	10,116 (45)	3,600	75 (23)	Yanmar L-70V**	Diesel	6.4 (4.8)	N/A	725 (328)
MVH406GH	22x35 (550x900)	28"x35 (700x900)	12,365 (55)	4,200	75 (23)	Honda GX-390	Gas	11.0 (8.2)	N/A	816 (416)
MVH406DSZ	22x35 (550x900)	28"x35 (700x900)	12,365 (55)	4,200	75 (23)	Hatz/Subaru 1B40	Diesel	10 (7.2)	N/A	1,003 (455)
MVH502DSB2	22x35 (550x900)	28"x35 (700x900)	13,871 (61.7)	4,200	75 (23)	Hatz 1D81S**	Diesel	14.3 (10.6)	N/A	1,122 (510)

© COPYRIGHT 2011, MULTIQIP INC.

* Extension plates are included with the MVH306, 406 and 502 series, increasing plate width to specified size.

Electric start models do not include battery.

** Oil alarm is not available on diesel-powered models.

* Engine power ratings are calculated by the individual engine manufacturer and the rating method may vary among engine manufacturers. Multiquip Inc. and its subsidiary companies makes no claim, representation or warranty as to the power rating of the engine on this equipment and disclaims any responsibility or liability of any kind whatsoever with respect to the accuracy of the engine power rating. Users are advised to consult the engine manufacturer's owners manual and its website for specific information regarding the engine power rating.

Your Multiquip dealer is:



MULTIQIP INC.
 POST OFFICE BOX 6254
 CARSON, CA 90749
 310-537-3700 • 800-421-1244
 FAX: 310-537-3927
 E-MAIL: mq@multiquip.com
 www.multiquip.com

All features and specifications are subject to change without notice.
 Rev. (12-11)

Connect with us on

