

SCARIFIERS

Mini-Planer, Walk Behind & Self-Propelled



EDCO®

Equipment Development Co., Inc.

edcoinc.com
1-800-638-3326

SURFACE PREPARATION & PROFESSIONAL SAWING EQUIPMENT

8" Scari-Lite Mini-Planer



Model
CPL-8

Ideal for

- Removing paint, urethane, thin-set and coatings
- Etch and/or prep the surface for new coatings

Features

- Lightweight, portable & economical
- Includes 8" Drum
- Uses same carbide cutters as the CPM-8 Model scarifier
- Removes up to a $\frac{1}{32}$ " per pass

Specifications

Power Options: Electric 1.5HP (110V, Single Phase)
Gasoline *5.5HP

Length: 31" (79 cm) **Width:** 19" (48 cm)
Height: 42.5" (108 cm) **Weight:** 145 lbs. (202 kg)

Working Width: 8"

Production: Scarifiers approximately 175-250 sq. ft.
per hr. at a depth per pass of $\frac{1}{32}$ "

Accessory: Steel or Carbide Cutters

NET HORSEPOWER STATEMENT - * As rated by the engine manufacturer. The power rating of the engine indicated in this document is the net power output tested on a production engine for the engine model and measured in accordance with SAE j1349 at 3600 rpm. Mass production engines may vary from this value. Actual power output for the engine installed in the final machine will vary depending on numerous factors, including the opening speed of the engine in application, environmental conditions, maintenance, and other variables.

8" Walk Behind Scarifier



Click or Scan
for video



Model
CPM-8

Ideal for

- Sidewalk trip hazard repair
- Coatings and/or traffic marking removal
- Cleaning floors and/or surface preparation
- Creating non-slip surfaces

Features

- Portable
- Includes 1- 8" Drum
- Removes up to a 1/8" per pass

Specifications

Power Options: Electric 5HP (230V) or 5HP (230 or 460V)
Gasoline *9HP – Honda

Length: 35" (89 cm)

Width: 20" (51 cm)

Height: 39" (99 cm)

Weight: 190 lbs. (87 kg)

Working Width: 8"

Production: Scarifiers approximately 350-500 sq. ft. per hr. at a depth per pass of 1/8"

Accessory: Steel or Carbide Cutters

10" Walk Behind Scarifier



Model
CPM-10

Ideal for

- Aggressive removal of material
- Production scarification
- Repair trip hazards or warehouse fork truck bumps

Features

- Heavy-Duty walk behind model scarifier
- Includes 1- 10" Drum
- Removes up to a 1/8" per pass

Specifications

Power Options: Electric 7.5 HP (230V or 460V)
Gasoline *13HP – Honda

Length: 41" (104 cm)

Width: 23" (59 cm)

Height: 41" (104 cm)

Weight: 267 lbs. (122 kg)

Working Width: 10"

Production: Scarifiers approximately 450-600 sq. ft. per hr. at a depth per pass of 1/8"

Accessory: Steel or Carbide Cutters

10" Self-Propelled Scarifier



Model
CPU-10-(FC)

Ideal for

- Parking deck and road repairs
- Factory floor cleaning and/or preparation
- Mall floor repairs

Features

- Includes 1 - 8 1/2" or 10" drum with upcut rotation
- Hydrostatic drive transmission provides smooth forward and reverse speed
- Optional outrigger axle assembly enables machine to follow slab contours closely when working on uneven surfaces or when uniform surface is critical

Specifications

Power Options: Electric 10HP (230 or 460V, Three Phase)
Gasoline *13HP or *20HP

Length: 45" (115 cm)

Width: 24" (61 cm)

Height: 38" (97 cm)

Weight: 512 lbs. (233 kg)

Working Width: 8 1/2"

Production: Model CPU-10 has a 10" drum width and model CPU-10-C has an 8 1/2" drum width that will scarify approx. 500-750 s. ft. per hr. at a depth per pass 1/8"

Accessory: Steel or Carbide Cutters

12" Self-Propelled Scarifier



Click or Scan
for video

Model
CPU-12

Ideal for

- Planing concrete, asphalt epoxies, elastomerics and masterplate floors with ease
- High production use in industrial plants, malls, dairy barns, warehouses, and on roads

Features

- Includes 1 - 12" drum with upcut rotation
- Hydrostatic drive transmission provides smooth forward and reverse speed
- Standard outrigger assembly enables machine to follow slab contours closely when working on uneven surfaces and provides uniform surface removal

Specifications

Power Options: Electric 15HP (230V or 460V, Three Phase)
Gasoline *35HP

Length: 53" (135 cm)

Width: 36" (92 cm)

Height: 43" (110 cm)

Weight: 980 lbs. (446 kg)

Working Width: 12"

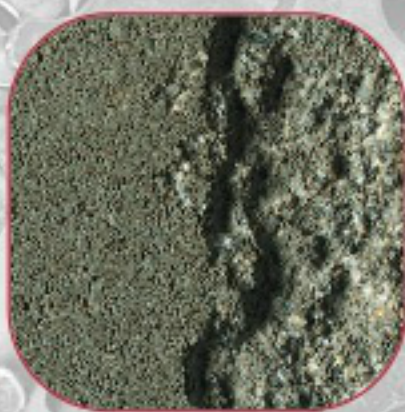
Production: Scarifiers approximately 1,250-1,500 sq. ft. per hr. at a depth per pass of 1/8"

Accessory: Steel or Carbide Cutters

Use **SECO** Scarifiers To:



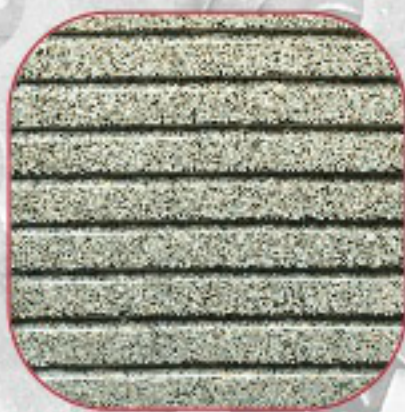
Clean



Texture



Level



Groove

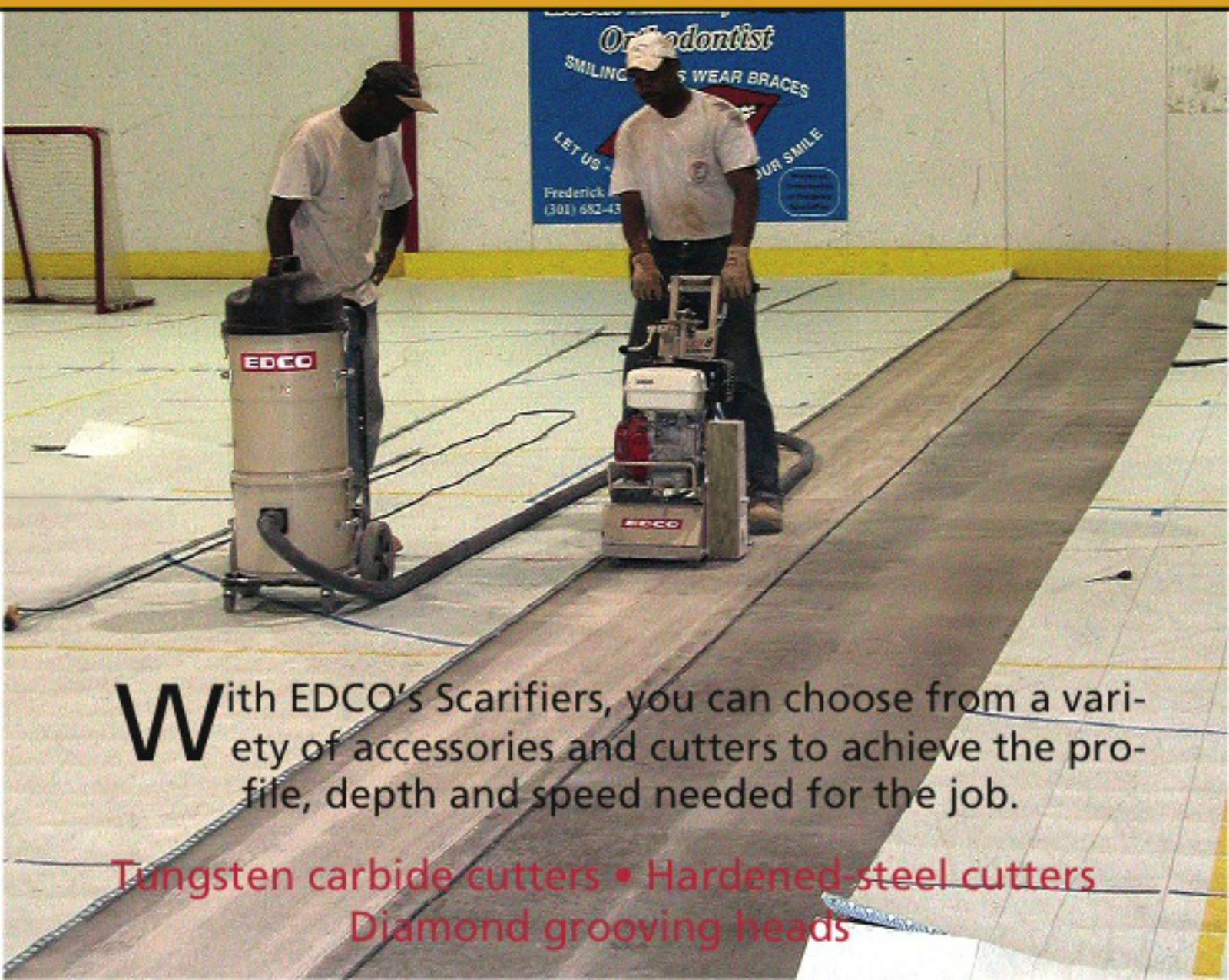


Remove

Change a Drum In Minutes



With EDCO's quick-change drum design and spare drum assemblies, you'll be back on the job in minutes. Our six shaft drum assembly holds more cutters per loading for added grinding action, a more uniform surface texture and fewer drum changes.



With EDCO's Scarifiers, you can choose from a variety of accessories and cutters to achieve the profile, depth and speed needed for the job.

**Tungsten carbide cutters • Hardened-steel cutters
Diamond grooving heads**